

Anti-OTX2 antibody (140-280) (STJ115971)

STJ115971

GENERAL INFORMATION

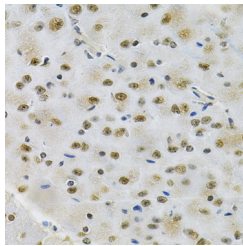
Product Type	Primary antibodies
Short Description	Rabbit polyclonal antibody anti-OTX2 (140-280) is suitable for use in Immunohistochemistry and Immunofluorescence.
Applications	IHC, IF
Host/Source	Rabbit
Reactivity	Mouse, Rat

PRODUCT PROPERTIES

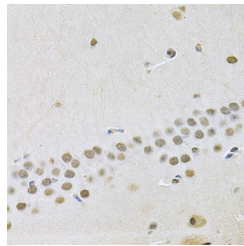
Clonality	Polyclonal
Clone ID	
Concentration	
Conjugation	Unconjugated
Purification	Affinity purification
Dilution Range	IHC 1:50-1:100 IF 1:50-1:100
Formulation	PBS containing 0.02% Sodium Azide, 50% Glycerol, pH7.3.
Isotype	IgG
Storage Instruction	Store in a freezer at -20°C and avoid freeze-thaw cycles.

TARGET INFORMATION

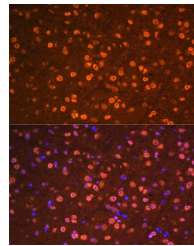
Gene ID	5015
Gene Symbol	OTX2
Uniprot ID	OTX2_HUMAN
Immunogen	Recombinant fusion protein containing a sequence corresponding to amino acids 140-280 of human OTX2 (NP_068374.1).
Immunogen Region	140-280
Specificity	
Immunogen Sequence	



Immunohistochemistry of paraffin-embedded rat brain using OTX2 Antibody (STJ115971) at dilution of 1:100 (40x lens).



Immunohistochemistry of paraffin-embedded mouse brain using OTX2 Antibody (STJ115971) at dilution of 1:100 (40x lens).



Immunofluorescence analysis of mouse brain cells using OTX2 antibody (STJ115971) at dilution of 1:100. Blue: DAPI for nuclear staining.

This product is suitable for in-vitro studies under the RESEARCH USE ONLY [RUO] licence. This product must not be used as for diagnostic or other medical purposes.
St John's Laboratory Ltd, Knowledge Dock Business Centre, University Way, London, E16 2RD | Tel: 0208 223 3081