

Anti-HLA-DPB1 antibody (30-225) (STJ115932)

STJ115932

GENERAL INFORMATION

Product Type	Primary antibodies
Short Description	Rabbit polyclonal antibody anti-HLA-DPB1 (30-225) is suitable for use in Western Blot and Immunohistochemistry.
Applications	WB, IHC
Host/Source	Rabbit
Reactivity	Human, Mouse, Rat

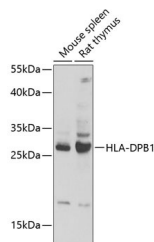
PRODUCT PROPERTIES

Clonality	Polyclonal
Clone ID	
Concentration	
Conjugation	Unconjugated
Purification	Affinity purification
Dilution Range	WB 1:500-1:2000 IHC 1:50-1:200
Formulation	PBS containing 0.02% Sodium Azide, 50% Glycerol, pH7.3.
Isotype	IgG
Storage Instruction	Store in a freezer at -20°C and avoid freeze-thaw cycles.

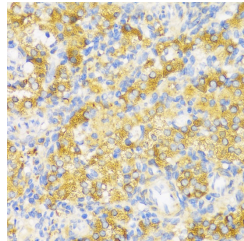
TARGET INFORMATION

Gene ID	3115
Gene Symbol	HLA-DPB1
Uniprot ID	DPB1_HUMAN
Immunogen	Recombinant fusion protein containing a sequence corresponding to amino acids 30-225 of human HLA-DPB1 (NP_002112.3).
Immunogen Region	30-225

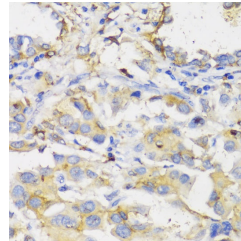
Specificity
Immunogen
Sequence



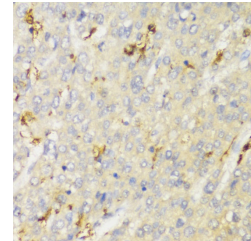
Western blot analysis of extracts of various cell lines, using HLA-DPB1 antibody (STJ115932) at 1:1000 dilution. Secondary antibody: HRP Goat Anti-rabbit IgG (H+L) at 1:10000 dilution. Lysates/proteins: 25ug per lane. Blocking buffer: 3% nonfat dry milk in TBST. Detection: ECL Basic Kit. Exposure time: 30s.



Immunohistochemistry of paraffin-embedded rat ovary using HLA-DPB1 antibody (STJ115932) at dilution of 1:100 (40x lens).



Immunohistochemistry of paraffin-embedded human lung cancer using HLA-DPB1 antibody (STJ115932) at dilution of 1:100 (40x lens).



Immunohistochemistry of paraffin-embedded human liver cancer using HLA-DPB1 antibody (STJ115932) at dilution of 1:100 (40x lens).

This product is suitable for in-vitro studies under the RESEARCH USE ONLY [RUO] licence. This product must not be used as for diagnostic or other medical purposes.
St John's Laboratory Ltd, Knowledge Dock Business Centre, University Way, London, E16 2RD | Tel: 0208 223 3081