

Anti-GLA antibody (150-429) (STJ115922)

STJ115922

GENERAL INFORMATION

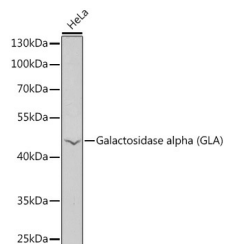
Product Type	Primary antibodies
Short Description	Rabbit polyclonal antibody anti-GLA (150-429) is suitable for use in Western Blot.
Applications	WB
Host/Source	Rabbit
Reactivity	Human

PRODUCT PROPERTIES

Clonality	Polyclonal
Clone ID	
Concentration	
Conjugation	Unconjugated
Purification	Affinity purification
Dilution Range	WB 1:500-1:2000
Formulation	PBS containing 0.02% Sodium Azide, 50% Glycerol, pH7.3.
Isotype	IgG
Storage	Store in a freezer at -20°C and avoid freeze-thaw cycles.
Instruction	

TARGET INFORMATION

Gene ID	2717
Gene Symbol	GLA
Uniprot ID	AGAL_HUMAN
Immunogen	Recombinant fusion protein containing a sequence corresponding to amino acids 150-429 of human Galactosidase alpha (Galactosidase alpha (GLA)) (NP_000160.1).
Immunogen Region	150-429
Specificity	
Immunogen Sequence	



Western blot analysis of extracts of HeLa cells, using Galactosidase alpha (Galactosidase alpha (GLA)) antibody (STJ115922) at 1:1000 dilution. Secondary antibody: HRP Goat Anti-rabbit IgG (H+L) at 1:10000 dilution. Lysates/proteins: 25ug per lane. Blocking buffer: 3% nonfat dry milk in TBST. Detection: ECL Basic Kit. Exposure time: 30s.

This product is suitable for in-vitro studies under the RESEARCH USE ONLY [RUO] licence. This product must not be used as for diagnostic or other medical purposes.
 St John's Laboratory Ltd, Knowledge Dock Business Centre, University Way, London, E16 2RD | Tel: 0208 223 3081