

Anti-EWSR1 antibody (1-300) (STJ115913)

STJ115913

GENERAL INFORMATION

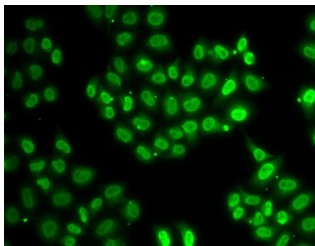
| | |
|--------------------------|--|
| Product Type | Primary antibodies |
| Short Description | Rabbit polyclonal antibody anti-EWSR1 (1-300) is suitable for use in Immunofluorescence. |
| Applications | IF |
| Host/Source | Rabbit |
| Reactivity | Human |

PRODUCT PROPERTIES

| | |
|----------------------------|---|
| Clonality | Polyclonal |
| Clone ID | |
| Concentration | |
| Conjugation | Unconjugated |
| Purification | Affinity purification |
| Dilution Range | IF 1:50-1:100 |
| Formulation | PBS containing 0.02% Sodium Azide, 50% Glycerol, pH7.3. |
| Isotype | IgG |
| Storage Instruction | Store in a freezer at -20°C and avoid freeze-thaw cycles. |

TARGET INFORMATION

| | |
|---------------------------|--|
| Gene ID | 2130 |
| Gene Symbol | EWSR1 |
| Uniprot ID | EWS_HUMAN |
| Immunogen | Recombinant fusion protein containing a sequence corresponding to amino acids 1-300 of human EWSR1 (NP_001156757.1). |
| Immunogen Region | 1-300 |
| Specificity | |
| Immunogen Sequence | |



Immunofluorescence analysis of U2OS cells using EWSR1 antibody (STJ115913).