

Anti-IRF8 antibody (137-426) (STJ115632)

STJ115632

GENERAL INFORMATION

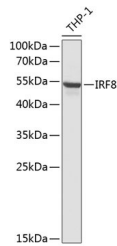
| | |
|--------------------------|--|
| Product Type | Primary antibodies |
| Short Description | Rabbit polyclonal antibody anti-IRF8 (137-426) is suitable for use in Western Blot and Immunofluorescence. |
| Applications | WB, IF |
| Host/Source | Rabbit |
| Reactivity | Human |

PRODUCT PROPERTIES

| | |
|----------------------------|---|
| Clonality | Polyclonal |
| Clone ID | |
| Concentration | |
| Conjugation | Unconjugated |
| Purification | Affinity purification |
| Dilution Range | WB 1:500-1:2000 IF 1:50-1:200 |
| Formulation | PBS containing 0.02% Sodium Azide, 50% Glycerol, pH7.3. |
| Isotype | IgG |
| Storage Instruction | Store in a freezer at -20°C and avoid freeze-thaw cycles. |

TARGET INFORMATION

| | |
|---------------------------|--|
| Gene ID | 3394 |
| Gene Symbol | IRF8 |
| Uniprot ID | IRF8_HUMAN |
| Immunogen | Recombinant fusion protein containing a sequence corresponding to amino acids 137-426 of human IRF8 (NP_002154.1). |
| Immunogen Region | 137-426 |
| Specificity | |
| Immunogen Sequence | |



Western blot analysis of extracts of THP-1 cells, using IRF8 antibody (STJ115632) at 1:1000 dilution. Secondary antibody: HRP-Coat Anti-rabbit IgG (H+L) at 1:10000 dilution. Lysates/proteins: 25µg per lane. Blocking buffer: 3% nonfat dry milk in TBST. Detection: ECL Basic Kit. Exposure time: 90s.

This product is suitable for in-vitro studies under the RESEARCH USE ONLY [RUO] licence. This product must not be used as for diagnostic or other medical purposes.
St John's Laboratory Ltd, Knowledge Dock Business Centre, University Way, London, E16 2RD | Tel: 0208 223 3081