

Anti-CP antibody (20-300) (STJ115616)

STJ115616

GENERAL INFORMATION

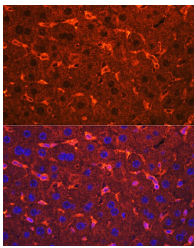
Product Type	Primary antibodies
Short Description	Rabbit polyclonal antibody anti-Ceruloplasmin (20-300) is suitable for use in Immunofluorescence.
Applications	IF
Host/Source	Rabbit
Reactivity	Human, Mouse, Rat

PRODUCT PROPERTIES

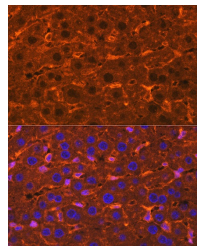
Clonality	Polyclonal
Clone ID	
Concentration	
Conjugation	Unconjugated
Purification	Affinity purification
Dilution Range	IF 1:50-1:200
Formulation	PBS containing 0.02% Sodium Azide, 50% Glycerol, pH7.3.
Isotype	IgG
Storage Instruction	Store in a freezer at -20°C and avoid freeze-thaw cycles.

TARGET INFORMATION

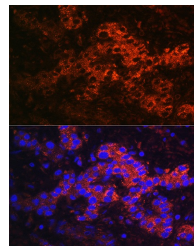
Gene ID	1356
Gene Symbol	CP
Uniprot ID	CERU_HUMAN
Immunogen	Recombinant fusion protein containing a sequence corresponding to amino acids 20-300 of human Ceruloplasmin (NP_000087.1).
Immunogen Region	20-300
Specificity	
Immunogen Sequence	



Immunofluorescence analysis of mouse liver using Ceruloplasmin rabbit polyclonal antibody (STJ115616) at dilution of 1:100. Blue: DAPI for nuclear staining.



Immunofluorescence analysis of Rat liver using Ceruloplasmin rabbit polyclonal antibody (STJ115616) at dilution of 1:100. Blue: DAPI for nuclear staining.



Immunofluorescence analysis of Human liver cancer using Ceruloplasmin rabbit polyclonal antibody (STJ115616) at dilution of 1:100. Blue: DAPI for nuclear staining.

This product is suitable for in-vitro studies under the RESEARCH USE ONLY [RUO] licence. This product must not be used as for diagnostic or other medical purposes.
 St John's Laboratory Ltd, Knowledge Dock Business Centre, University Way, London, E16 2RD | Tel: 0208 223 3081