

Anti-C11orf30 antibody (1153-1322) (STJ115602)

STJ115602

GENERAL INFORMATION

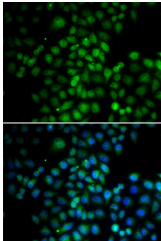
Product Type	Primary antibodies
Short Description	Rabbit polyclonal antibody anti-C11orf30 (1153-1322) is suitable for use in Western Blot and Immunofluorescence.
Applications	WB, IF
Host/Source	Rabbit
Reactivity	Human, Mouse, Rat

PRODUCT PROPERTIES

Clonality	Polyclonal
Clone ID	
Concentration	
Conjugation	Unconjugated
Purification	Affinity purification
Dilution Range	WB 1:500-1:2000 IF 1:50-1:200
Formulation	PBS containing 0.02% Sodium Azide, 50% Glycerol, pH7.3.
Isotype	IgG
Storage Instruction	Store in a freezer at -20°C and avoid freeze-thaw cycles.

TARGET INFORMATION

Gene ID	56946
Gene Symbol	EMSY
Uniprot ID	EMSY_HUMAN
Immunogen	Recombinant fusion protein containing a sequence corresponding to amino acids 1153-1322 of human C11orf30 (NP_064578.2).
Immunogen Region	1153-1322
Specificity	
Immunogen Sequence	



Immunofluorescence analysis of HeLa cells using C11orf30 antibody (STJ115602). Blue: DAPI for nuclear staining.