

Anti-UHRF2 antibody (441-622) (STJ115563)

STJ115563

GENERAL INFORMATION

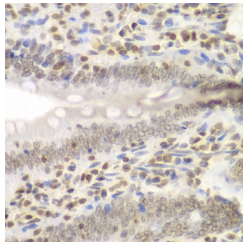
Product Type	Primary antibodies
Short Description	Rabbit polyclonal antibody anti-UHRF2 (441-622) is suitable for use in Western Blot, Immunohistochemistry and Immunofluorescence.
Applications	WB, IHC, IF
Host/Source	Rabbit
Reactivity	Human, Mouse, Rat

PRODUCT PROPERTIES

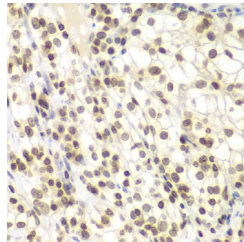
Clonality	Polyclonal
Clone ID	
Concentration	
Conjugation	Unconjugated
Purification	Affinity purification
Dilution Range	WB 1:500-1:2000 IHC 1:50-1:200 IF 1:50-1:200
Formulation	PBS containing 0.02% Sodium Azide, 50% Glycerol, pH7.3.
Isotype	IgG
Storage Instruction	Store in a freezer at -20°C and avoid freeze-thaw cycles.

TARGET INFORMATION

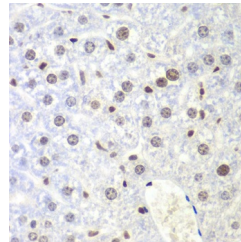
Gene ID	115426
Gene Symbol	UHRF2
Uniprot ID	UHRF2_HUMAN
Immunogen	Recombinant fusion protein containing a sequence corresponding to amino acids 441-622 of human UHRF2 (NP_690856.1).
Immunogen Region	441-622
Specificity	
Immunogen Sequence	



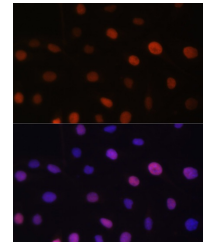
Immunohistochemistry of paraffin-embedded rat Intestine using UHRF2 antibody (STJ115563) at dilution of 1:200 (40x lens).



Immunohistochemistry of paraffin-embedded human kidney cancer using UHRF2 antibody (STJ115563) at dilution of 1:200 (40x lens).



Immunohistochemistry of paraffin-embedded mouse liver using UHRF2 antibody (STJ115563) at dilution of 1:200 (40x lens).



Immunofluorescence analysis of U-2 OS cells using UHRF2 antibody (STJ115563) at dilution of 1:100. Blue: DAPI for nuclear staining.

This product is suitable for in-vitro studies under the RESEARCH USE ONLY [RUO] licence. This product must not be used as for diagnostic or other medical purposes.
St John's Laboratory Ltd, Knowledge Dock Business Centre, University Way, London, E16 2RD | Tel: 0208 223 3081