

Anti-APOBEC3G antibody (60-330) (STJ115559)

STJ115559

GENERAL INFORMATION

Product Type	Primary antibodies
Short Description	Rabbit polyclonal antibody anti-APOBEC3G (60-330) is suitable for use in Western Blot, Immunohistochemistry and Immunofluorescence.
Applications	WB, IHC, IF
Host/Source	Rabbit
Reactivity	Human, Mouse, Rat

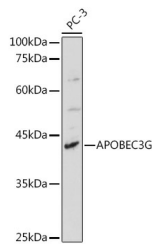
PRODUCT PROPERTIES

Clonality	Polyclonal
Clone ID	
Concentration	
Conjugation	Unconjugated
Purification	Affinity purification
Dilution Range	WB 1:500-1:2000 IHC 1:50-1:200 IF 1:50-1:200
Formulation	PBS containing 0.02% Sodium Azide, 50% Glycerol, pH7.3.
Isotype	IgG
Storage Instruction	Store in a freezer at -20°C and avoid freeze-thaw cycles.

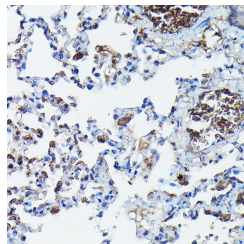
TARGET INFORMATION

Gene ID	60489
Gene Symbol	APOBEC3G
Uniprot ID	ABC3G_HUMAN
Immunogen	Recombinant fusion protein containing a sequence corresponding to amino acids 60-330 of human APOBEC3G (NP_068594.1).

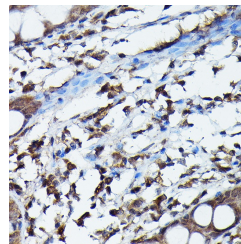
Immunogen Region 60-330
Specificity
Immunogen Sequence



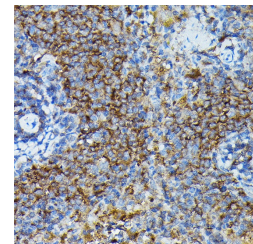
Western blot analysis of extracts of PC-3 cells, using APOBEC3G antibody (STJ115559) at 1:1000 dilution. Secondary antibody: HRP Goat Anti-rabbit IgG (H+L) at 1:10000 dilution. Lysates/proteins: 25µg per lane. Blocking buffer: 3% nonfat dry milk in TBST. Detection: ECL Basic Kit. Exposure time: 180s.



Immunohistochemistry of paraffin-embedded rat lung using APOBEC3G rabbit polyclonal antibody (STJ115559) at dilution of 1:100 (40x lens).



Immunohistochemistry of paraffin-embedded human colon using APOBEC3G rabbit polyclonal antibody (STJ115559) at dilution of 1:100 (40x lens).



Immunohistochemistry of paraffin-embedded mouse spleen using APOBEC3G rabbit polyclonal antibody (STJ115559) at dilution of 1:100 (40x lens).