

Anti-LSM4 antibody (1-139) (STJ115549)

STJ115549

GENERAL INFORMATION

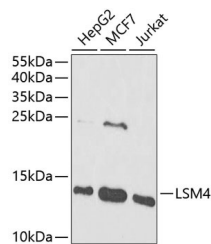
Product Type	Primary antibodies
Short Description	Rabbit polyclonal antibody anti-LSM4 (1-139) is suitable for use in Western Blot, Immunohistochemistry, Immunofluorescence and Immunoprecipitation.
Applications	WB, IHC, IF, IP
Host/Source	Rabbit
Reactivity	Human

PRODUCT PROPERTIES

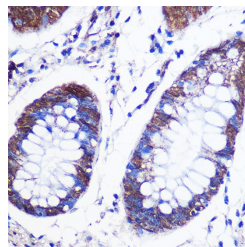
Clonality	Polyclonal
Clone ID	
Concentration	
Conjugation	Unconjugated
Purification	Affinity purification
Dilution Range	WB 1:500-1:2000 IHC 1:50-1:200 IF 1:50-1:200 IP 1:20-1:50
Formulation	PBS containing 0.02% Sodium Azide, 50% Glycerol, pH7.3.
Isotype	IgG
Storage Instruction	Store in a freezer at -20°C and avoid freeze-thaw cycles.

TARGET INFORMATION

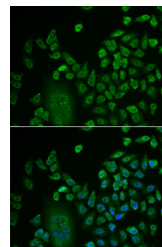
Gene ID	25804
Gene Symbol	LSM4
Uniprot ID	LSM4_HUMAN
Immunogen	Recombinant fusion protein containing a sequence corresponding to amino acids 1-139 of human LSM4 (NP_036453.1).
Immunogen Region	1-139
Specificity	
Immunogen Sequence	



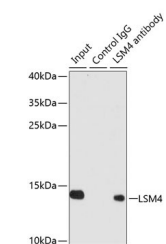
Western blot analysis of extracts of various cell lines, using LSM4 antibody (STJ115549) at 1:1000 dilution. Secondary antibody: HRP Goat Anti-rabbit IgG (H+L) at 1:10000 dilution. Lysates/proteins: 25ug per lane. Blocking buffer: 3% nonfat dry milk in TBST. Detection: ECL Enhanced Kit. Exposure time: 5s.



Immunohistochemistry of paraffin-embedded human colon using LSM4 rabbit polyclonal antibody (STJ115549) at dilution of 1:100 (40x lens). Perform microwave antigen retrieval with 10 mM PBS buffer pH 7.2 before commencing with immunohistochemistry staining protocol.



Immunofluorescence analysis of HeLa cells using LSM4 antibody (STJ115549) at dilution of 1:50. Blue: DAPI for nuclear staining.



Immunoprecipitation analysis of 200ug extracts of Jurkat cells using 1ug LSM4 antibody (STJ115549). Western blot was performed from the immunoprecipitate using LSM4 antibody (STJ115549) at a dilution of 1:1000.

This product is suitable for in-vitro studies under the RESEARCH USE ONLY [RUO] licence. This product must not be used as for diagnostic or other medical purposes.
St John's Laboratory Ltd, Knowledge Dock Business Centre, University Way, London, E16 2RD | Tel: 0208 223 3081