

Anti-NUTF2 antibody (1-127) (STJ115537)

STJ115537

GENERAL INFORMATION

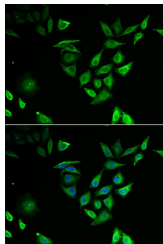
Product Type	Primary antibodies
Short Description	Rabbit polyclonal antibody anti-NUTF2 (1-127) is suitable for use in Western Blot and Immunofluorescence.
Applications	WB, IF
Host/Source	Rabbit
Reactivity	Human, Rat

PRODUCT PROPERTIES

Clonality	Polyclonal
Clone ID	
Concentration	
Conjugation	Unconjugated
Purification	Affinity purification
Dilution Range	WB 1:500-1:2000 IF 1:50-1:200
Formulation	PBS containing 0.02% Sodium Azide, 50% Glycerol, pH7.3.
Isotype	IgG
Storage Instruction	Store in a freezer at -20°C and avoid freeze-thaw cycles.

TARGET INFORMATION

Gene ID	10204
Gene Symbol	NUTF2
Uniprot ID	NTF2_HUMAN
Immunogen	Recombinant fusion protein containing a sequence corresponding to amino acids 1-127 of human NUTF2 (NP_005787.1).
Immunogen Region	1-127
Specificity	
Immunogen Sequence	



Immunofluorescence analysis of U2OS cells using NUTF2 antibody (STJ115537). Blue: DAPI for nuclear staining.