

Anti-SSX2 antibody (1-188) (STJ115509)

STJ115509

GENERAL INFORMATION

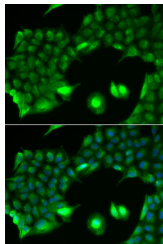
Product Type	Primary antibodies
Short Description	Rabbit polyclonal antibody anti-SSX2 (1-188) is suitable for use in Western Blot and Immunofluorescence.
Applications	WB, IF
Host/Source	Rabbit
Reactivity	Human, Mouse, Rat

PRODUCT PROPERTIES

Clonality	Polyclonal
Clone ID	
Concentration	
Conjugation	Unconjugated
Purification	Affinity purification
Dilution Range	WB 1:500-1:2000 IF 1:50-1:200
Formulation	PBS containing 0.02% Sodium Azide, 50% Glycerol, pH7.3.
Isotype	IgG
Storage Instruction	Store in a freezer at -20°C and avoid freeze-thaw cycles.

TARGET INFORMATION

Gene ID	6757/727837
Gene Symbol	SSX2, SSX2B
Uniprot ID	SSX2_HUMAN
Immunogen	Recombinant fusion protein containing a sequence corresponding to amino acids 1-188 of human SSX2 (NP_783629.1).
Immunogen Region	1-188
Specificity	
Immunogen Sequence	



Immunofluorescence analysis of HeLa cells using SSX2 antibody (STJ115509). Blue: DAPI for nuclear staining.

This product is suitable for in-vitro studies under the RESEARCH USE ONLY [RUO] licence. This product must not be used as for diagnostic or other medical purposes.
St John's Laboratory Ltd, Knowledge Dock Business Centre, University Way, London, E16 2RD | Tel: 0208 223 3081