

Anti-UPF1 antibody (270-370) (STJ115502)

STJ115502

GENERAL INFORMATION

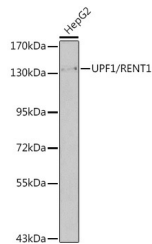
Product Type	Primary antibodies
Short Description	Rabbit polyclonal antibody anti-UPF1 (270-370) is suitable for use in Western Blot and Immunohistochemistry.
Applications	WB, IHC
Host/Source	Rabbit
Reactivity	Human, Mouse

PRODUCT PROPERTIES

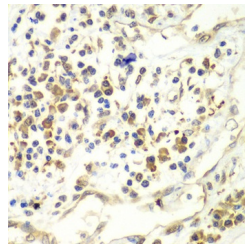
Clonality	Polyclonal
Clone ID	
Concentration	
Conjugation	Unconjugated
Purification	Affinity purification
Dilution Range	WB 1:500-1:2000 IHC 1:50-1:200
Formulation	PBS containing 0.02% Sodium Azide, 50% Glycerol, pH7.3.
Isotype	IgG
Storage Instruction	Store in a freezer at -20°C and avoid freeze-thaw cycles.

TARGET INFORMATION

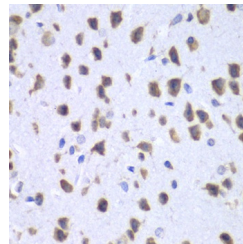
Gene ID	5976
Gene Symbol	UPF1
Uniprot ID	RENT1_HUMAN
Immunogen	A synthetic peptide corresponding to a sequence within amino acids 270-370 of human UPF1/RENT1 (NP_002902.2).
Immunogen Region	270-370
Specificity	
Immunogen Sequence	



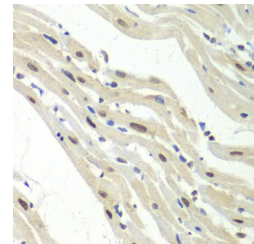
Western blot analysis of extracts of HepG2 cells, using UPF1/RENT1 antibody (STJ115502) at 1:500 dilution. Secondary antibody: HRP Goat Anti-rabbit IgG (H+L) at 1:10000 dilution. Lysates/proteins: 25µg per lane. Blocking buffer: 3% nonfat dry milk in TBST. Detection: ECL Basic Kit.



Immunohistochemistry of paraffin-embedded human liver cancer using UPF1/RENT1 antibody (STJ115502) at dilution of 1:100 (40x lens).



Immunohistochemistry of paraffin-embedded mouse liver cancer using UPF1/RENT1 antibody (STJ115502) at dilution of 1:100 (40x lens).



Immunohistochemistry of paraffin-embedded mouse heart using UPF1/RENT1 antibody (STJ115502) at dilution of 1:100 (40x lens).

This product is suitable for in-vitro studies under the RESEARCH USE ONLY [RUO] licence. This product must not be used as for diagnostic or other medical purposes.
St John's Laboratory Ltd, Knowledge Dock Business Centre, University Way, London, E16 2RD | Tel: 0208 223 3081