

Anti-PSMA2 antibody (1-234) (STJ115495)

STJ115495

GENERAL INFORMATION

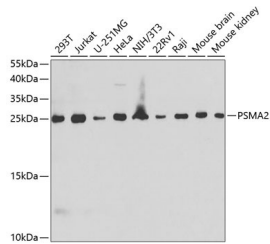
| | |
|--------------------------|---|
| Product Type | Primary antibodies |
| Short Description | Rabbit polyclonal antibody anti-PSMA2 (1-234) is suitable for use in Western Blot and Immunohistochemistry. |
| Applications | WB, IHC |
| Host/Source | Rabbit |
| Reactivity | Human, Mouse |

PRODUCT PROPERTIES

| | |
|----------------------------|---|
| Clonality | Polyclonal |
| Clone ID | |
| Concentration | |
| Conjugation | Unconjugated |
| Purification | Affinity purification |
| Dilution Range | WB 1:500-1:2000 IHC 1:50-1:200 |
| Formulation | PBS containing 0.02% Sodium Azide, 50% Glycerol, pH7.3. |
| Isotype | IgG |
| Storage Instruction | Store in a freezer at -20°C and avoid freeze-thaw cycles. |

TARGET INFORMATION

| | |
|---------------------------|---|
| Gene ID | 5683 |
| Gene Symbol | PSMA2 |
| Uniprot ID | PSA2_HUMAN |
| Immunogen | Recombinant fusion protein containing a sequence corresponding to amino acids 1-234 of human PSMA2 (NP_002778.1). |
| Immunogen Region | 1-234 |
| Specificity | |
| Immunogen Sequence | |



Western blot analysis of extracts of various cell lines, using PSMA2 antibody (STJ115495) at 1:1000 dilution. Secondary antibody: HRP-Goat Anti-rabbit IgG (H+L) at 1:10000 dilution. Lysates/proteins: 25ug per lane. Blocking buffer: 3% nonfat dry milk in TBST.

This product is suitable for in-vitro studies under the RESEARCH USE ONLY [RUO] licence. This product must not be used as for diagnostic or other medical purposes.
St John's Laboratory Ltd, Knowledge Dock Business Centre, University Way, London, E16 2RD | Tel: 0208 223 3081