

Anti-ELF3 antibody (1-280) (STJ115450)

STJ115450

GENERAL INFORMATION

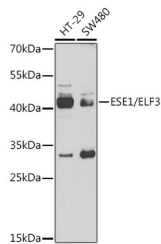
Product Type	Primary antibodies
Short Description	Rabbit polyclonal antibody anti-ELF3 (1-280) is suitable for use in Western Blot and Immunoprecipitation.
Applications	WB, IP
Host/Source	Rabbit
Reactivity	Human, Mouse

PRODUCT PROPERTIES

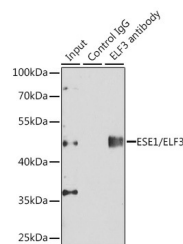
Clonality	Polyclonal
Clone ID	
Concentration	
Conjugation	Unconjugated
Purification	Affinity purification
Dilution Range	WB 1:500-1:2000 IP 1:20-1:50
Formulation	PBS containing 0.02% Sodium Azide, 50% Glycerol, pH7.3.
Isotype	IgG
Storage Instruction	Store in a freezer at -20°C and avoid freeze-thaw cycles.

TARGET INFORMATION

Gene ID	1999
Gene Symbol	ELF3
Uniprot ID	ELF3_HUMAN
Immunogen	Recombinant fusion protein containing a sequence corresponding to amino acids 1-280 of human ESE1/ESE1/ELF3 (NP_004424.3).
Immunogen Region	1-280
Specificity	
Immunogen Sequence	



Western blot analysis of extracts of various cell lines, using ESE1/ESE1/ELF3 antibody (STJ115450) at 1:1000 dilution. Secondary antibody: HRP Goat Anti-rabbit IgG (H+L) at 1:10000 dilution. Lysates/proteins: 25ug per lane. Blocking buffer: 3% nonfat dry milk in TBST. Detection: ECL Basic Kit. Exposure time: 90s.



Immunoprecipitation analysis of 150ug extracts of A549 cells using 3ug ESE1/ESE1/ELF3 antibody (STJ115450). Western blot was performed from the immunoprecipitate using ESE1/ESE1/ELF3 antibody (STJ115450) at a dilution of 1:500. Detection: ECL Enhanced Kit. Exposure time: 30s.

This product is suitable for in-vitro studies under the RESEARCH USE ONLY [RUO] licence. This product must not be used as for diagnostic or other medical purposes.
St John's Laboratory Ltd, Knowledge Dock Business Centre, University Way, London, E16 2RD | Tel: 0208 223 3081