

## Anti-ACPP antibody (40-300) (STJ115418)

STJ115418

### GENERAL INFORMATION

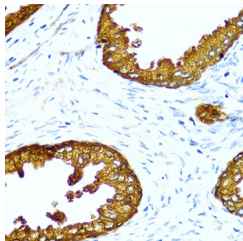
<b>Product Type</b>	Primary antibodies
<b>Short Description</b>	Rabbit polyclonal antibody anti-ACPP (40-300) is suitable for use in Immunohistochemistry and Immunofluorescence.
<b>Applications</b>	IHC, IF
<b>Host/Source</b>	Rabbit
<b>Reactivity</b>	Human

### PRODUCT PROPERTIES

<b>Clonality</b>	Polyclonal
<b>Clone ID</b>	
<b>Concentration</b>	
<b>Conjugation</b>	Unconjugated
<b>Purification</b>	Affinity purification
<b>Dilution Range</b>	IHC 1:50-1:200 IF 1:50-1:200
<b>Formulation</b>	PBS containing 0.02% Sodium Azide, 50% Glycerol, pH7.3.
<b>Isotype</b>	IgG
<b>Storage</b>	Store in a freezer at -20°C and avoid freeze-thaw cycles.
<b>Instruction</b>	

### TARGET INFORMATION

<b>Gene ID</b>	55
<b>Gene Symbol</b>	ACP3
<b>Uniprot ID</b>	PPAP_HUMAN
<b>Immunogen</b>	Recombinant fusion protein containing a sequence corresponding to amino acids 40-300 of human Prostatic Acid Phosphatase (PAP/Prostatic Acid Phosphatase (ACPP) ) (NP_001090.2).
<b>Immunogen Region</b>	40-300
<b>Specificity</b>	
<b>Immunogen Sequence</b>	



Immunohistochemistry of paraffin-embedded human prostate using Prostatic Acid Phosphatase (PAP/Prostatic Acid Phosphatase (ACPP) ) antibody (STJ115418) at dilution of 1:100 (40x lens). Perform microwave antigen retrieval with 10 mM PBS buffer pH 7.2 before commencing with immunohistochemistry staining protocol.