

Anti-TET3 antibody (1556-1795) (STJ115414)

STJ115414

GENERAL INFORMATION

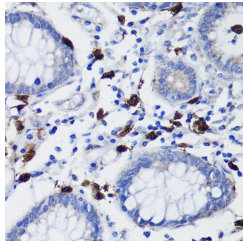
Product Type	Primary antibodies
Short Description	Rabbit polyclonal antibody anti-TET3 (1556-1795) is suitable for use in Immunohistochemistry and Immunofluorescence.
Applications	IHC, IF
Host/Source	Rabbit
Reactivity	Human

PRODUCT PROPERTIES

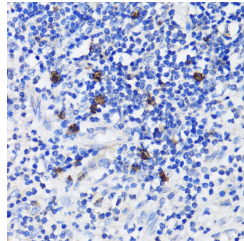
Clonality	Polyclonal
Clone ID	
Concentration	
Conjugation	Unconjugated
Purification	Affinity purification
Dilution Range	IHC 1:50-1:200 IF 1:50-1:200
Formulation	PBS containing 0.02% Sodium Azide, 50% Glycerol, pH7.3.
Isotype	IgG
Storage Instruction	Store in a freezer at -20°C and avoid freeze-thaw cycles.

TARGET INFORMATION

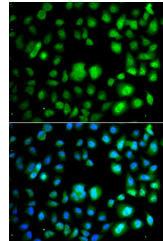
Gene ID	200424
Gene Symbol	TET3
Uniprot ID	TET3_HUMAN
Immunogen	Recombinant fusion protein containing a sequence corresponding to amino acids 1556-1795 of human TET3 (NP_001274420.1).
Immunogen Region	1556-1795
Specificity	
Immunogen Sequence	



Immunohistochemistry of paraffin-embedded human colon carcinoma using TET3 antibody (STJ115414) at dilution of 1:200 (40x lens).



Immunohistochemistry of paraffin-embedded human appendix using TET3 antibody (STJ115414) at dilution of 1:200 (40x lens).



Immunofluorescence analysis of A549 cells using TET3 antibody (STJ115414). Blue: DAPI for nuclear staining.

This product is suitable for in-vitro studies under the RESEARCH USE ONLY [RUO] licence. This product must not be used as for diagnostic or other medical purposes.
 St John's Laboratory Ltd, Knowledge Dock Business Centre, University Way, London, E16 2RD | Tel: 0208 223 3081