

Anti-CXXC1 antibody (1-210) (STJ115384)

STJ115384

GENERAL INFORMATION

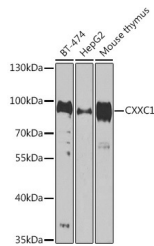
Product Type	Primary antibodies
Short Description	Rabbit polyclonal antibody anti-CXXC1 (1-210) is suitable for use in Western Blot, Immunofluorescence and Immunoprecipitation.
Applications	WB, IF, IP
Host/Source	Rabbit
Reactivity	Human, Mouse

PRODUCT PROPERTIES

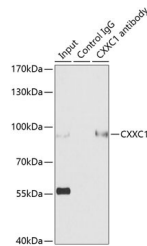
Clonality	Polyclonal
Clone ID	
Concentration	
Conjugation	Unconjugated
Purification	Affinity purification
Dilution Range	WB 1:500-1:2000 IF 1:50-1:200 IP 1:20-1:50
Formulation	PBS containing 0.02% Sodium Azide, 50% Glycerol, pH7.3.
Isotype	IgG
Storage Instruction	Store in a freezer at -20°C and avoid freeze-thaw cycles.

TARGET INFORMATION

Gene ID	30827
Gene Symbol	CXXC1
Uniprot ID	CXXC1_HUMAN
Immunogen	Recombinant fusion protein containing a sequence corresponding to amino acids 1-210 of human CXXC1 (NP_001095124.1).
Immunogen Region	1-210
Specificity	
Immunogen Sequence	



Western blot analysis of extracts of various cell lines, using CXXC1 antibody (STJ115384) at 1:1000 dilution. Secondary antibody: HRP Goat Anti-rabbit IgG (H+L) at 1:10000 dilution. Lysates/proteins: 25µg per lane. Blocking buffer: 3% nonfat dry milk in TBST. Detection: ECL Enhanced Kit. Exposure time: 90s.



Immunoprecipitation analysis of 200µg extracts of HepG2 cells using 3µg CXXC1 antibody (STJ115384). Western blot was performed from the immunoprecipitate using CXXC1 antibody (STJ115384) at a dilution of 1:500.