

Anti-SMARCE1 antibody (1-411) (STJ115316)

STJ115316

GENERAL INFORMATION

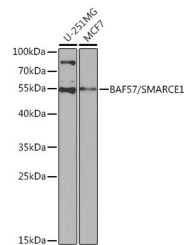
Product Type	Primary antibodies
Short Description	Rabbit polyclonal antibody anti-SMARCE1 (1-411) is suitable for use in Western Blot, Immunohistochemistry, Immunofluorescence and Immunoprecipitation.
Applications	WB, IHC, IF, IP
Host/Source	Rabbit
Reactivity	Human, Mouse, Rat

PRODUCT PROPERTIES

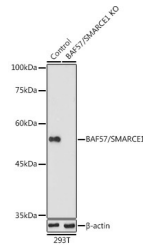
Clonality	Polyclonal
Clone ID	
Concentration	
Conjugation	Unconjugated
Purification	Affinity purification
Dilution Range	WB 1:500-1:2000 IHC 1:50-1:200 IF 1:50-1:200 IP 1:20-1:50
Formulation	PBS containing 0.02% Sodium Azide, 50% Glycerol, pH7.3.
Isotype	IgG
Storage Instruction	Store in a freezer at -20°C and avoid freeze-thaw cycles.

TARGET INFORMATION

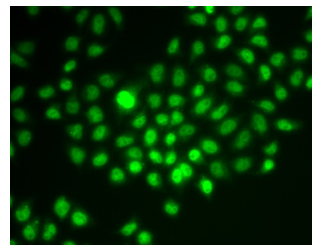
Gene ID	6605
Gene Symbol	SMARCE1
Uniprot ID	SMCE1_HUMAN
Immunogen	Recombinant fusion protein containing a sequence corresponding to amino acids 1-411 of human BAF57/BAF57/SMARCE1 (NP_003070.3).
Immunogen Region	1-411
Specificity	
Immunogen Sequence	



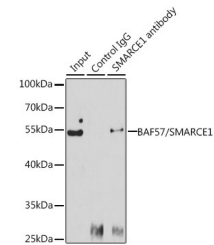
Western blot analysis of extracts of various cell lines, using BAF57/BAF57/SMARCE1 antibody (STJ115316) at 1:1000 dilution. Secondary antibody: HRP Goat Anti-rabbit IgG (H+L) at 1:10000 dilution. Lysates/proteins: 25µg per lane. Blocking buffer: 3% nonfat dry milk in TBST. Detection: ECL Basic Kit. Exposure time: 90s.



Western blot analysis of extracts from normal (control) and BAF57/SMARCE1 knockout (KO) 293T cells, using BAF57/SMARCE1 antibody (STJ115316) at 1:1000 dilution. Secondary antibody: HRP Goat Anti-rabbit IgG (H+L) at 1:10000 dilution. Lysates/proteins: 25µg per lane. Blocking buffer: 3% nonfat dry milk in TBST. Detection: ECL Enhanced Kit. Exposure time: 180s.



Immunofluorescence analysis of HeLa cells using BAF57/BAF57/SMARCE1 antibody (STJ115316).



Immunoprecipitation analysis of 150µg extracts of Jurkat cells using 8µg BAF57/BAF57/SMARCE1 antibody (STJ115316). Western blot was performed from the immunoprecipitate using BAF57/BAF57/SMARCE1 antibody (STJ115316) at a dilution of 1:1000.

This product is suitable for in-vitro studies under the RESEARCH USE ONLY [RUO] licence. This product must not be used as for diagnostic or other medical purposes.
St John's Laboratory Ltd, Knowledge Dock Business Centre, University Way, London, E16 2RD | Tel: 0208 223 3081