

Anti-MECP2 antibody (1-100) (STJ115291)

STJ115291

GENERAL INFORMATION

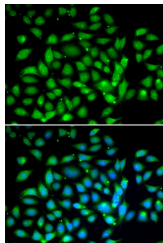
| | |
|--------------------------|--|
| Product Type | Primary antibodies |
| Short Description | Rabbit polyclonal antibody anti-MECP2 (1-100) is suitable for use in Immunofluorescence. |
| Applications | IF |
| Host/Source | Rabbit |
| Reactivity | Human |

PRODUCT PROPERTIES

| | |
|----------------------------|---|
| Clonality | Polyclonal |
| Clone ID | |
| Concentration | |
| Conjugation | Unconjugated |
| Purification | Affinity purification |
| Dilution Range | IF 1:50-1:200 |
| Formulation | PBS containing 0.02% Sodium Azide, 50% Glycerol, pH7.3. |
| Isotype | IgG |
| Storage Instruction | Store in a freezer at -20°C and avoid freeze-thaw cycles. |

TARGET INFORMATION

| | |
|---------------------------|--|
| Gene ID | 4204 |
| Gene Symbol | MECP2 |
| Uniprot ID | MECP2_HUMAN |
| Immunogen | A synthetic peptide corresponding to a sequence within amino acids 1-100 of human MECP2 (NP_004983.1). |
| Immunogen Region | 1-100 |
| Specificity | |
| Immunogen Sequence | |



Immunofluorescence analysis of U2OS cells using MECP2 antibody (STJ115291). Blue: DAPI for nuclear staining.