

Anti-ETV1 antibody (80-300) (STJ115267)

STJ115267

GENERAL INFORMATION

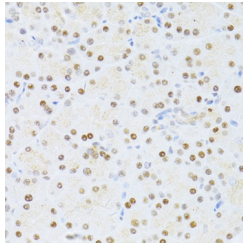
Product Type	Primary antibodies
Short Description	Rabbit polyclonal antibody anti-ETV1 (80-300) is suitable for use in Immunohistochemistry and Immunofluorescence.
Applications	IHC, IF
Host/Source	Rabbit
Reactivity	Human, Mouse, Rat

PRODUCT PROPERTIES

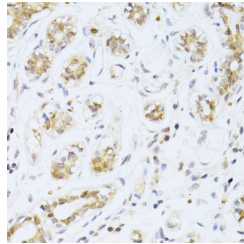
Clonality	Polyclonal
Clone ID	
Concentration	
Conjugation	Unconjugated
Purification	Affinity purification
Dilution Range	IHC 1:50-1:200 IF 1:50-1:200
Formulation	PBS containing 0.02% Sodium Azide, 50% Glycerol, pH7.3.
Isotype	IgG
Storage Instruction	Store in a freezer at -20°C and avoid freeze-thaw cycles.

TARGET INFORMATION

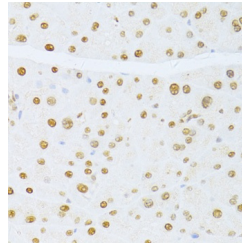
Gene ID	2115
Gene Symbol	ETV1
Uniprot ID	ETV1_HUMAN
Immunogen	Recombinant fusion protein containing a sequence corresponding to amino acids 80-300 of human ETV1 (NP_004947.2).
Immunogen Region	80-300
Specificity	
Immunogen Sequence	



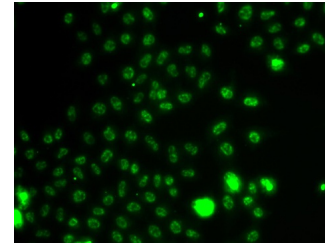
Immunohistochemistry of paraffin-embedded rat pancreas using ETV1 antibody (STJ115267) at dilution of 1:100 (40x lens).



Immunohistochemistry of paraffin-embedded human breast cancer using ETV1 antibody (STJ115267) at dilution of 1:100 (40x lens).



Immunohistochemistry of paraffin-embedded mouse pancreas using ETV1 antibody (STJ115267) at dilution of 1:100 (40x lens).



Immunofluorescence analysis of A549 cells using ETV1 antibody (STJ115267).

This product is suitable for in-vitro studies under the RESEARCH USE ONLY [RUO] licence. This product must not be used as for diagnostic or other medical purposes.
St John's Laboratory Ltd, Knowledge Dock Business Centre, University Way, London, E16 2RD | Tel: 0208 223 3081