

Anti-DLD antibody (36-300) (STJ115260)

STJ115260

GENERAL INFORMATION

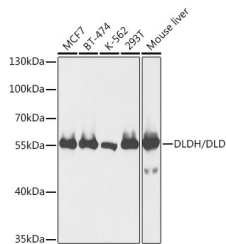
Product Type	Primary antibodies
Short Description	Rabbit polyclonal antibody anti-DLD (36-300) is suitable for use in Western Blot, Immunohistochemistry and Immunofluorescence.
Applications	WB, IHC, IF
Host/Source	Rabbit
Reactivity	Human, Mouse

PRODUCT PROPERTIES

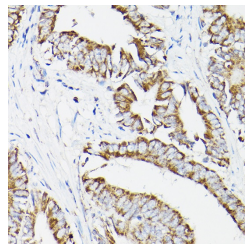
Clonality	Polyclonal
Clone ID	
Concentration	
Conjugation	Unconjugated
Purification	Affinity purification
Dilution Range	WB 1:500-1:2000 IHC 1:50-1:200 IF 1:50-1:200
Formulation	PBS containing 0.02% Sodium Azide, 50% Glycerol, pH7.3.
Isotype	IgG
Storage Instruction	Store in a freezer at -20°C and avoid freeze-thaw cycles.

TARGET INFORMATION

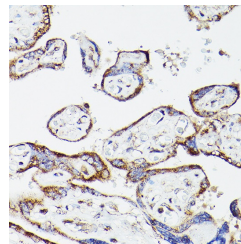
Gene ID	1738
Gene Symbol	DLD
Uniprot ID	DLDH_HUMAN
Immunogen	Recombinant fusion protein containing a sequence corresponding to amino acids 36-300 of human DLDH/DLDH/DLDH/DLD (NP_000099.2).
Immunogen Region	36-300
Specificity	
Immunogen Sequence	



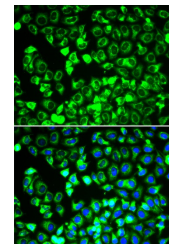
Western blot analysis of extracts of various cell lines, using DLDH/DLDH/DLDH/DLD antibody (STJ115260) at 1:1000 dilution. Secondary antibody: HRP Goat Anti-rabbit IgG (H+L) at 1:10000 dilution. Lysates/proteins: 25µg per lane. Blocking buffer: 3% nonfat dry milk in TBST. Detection: ECL Basic Kit. Exposure time: 5s.



Immunohistochemistry of paraffin-embedded human colon carcinoma using DLDH/DLDH/DLDH/DLD rabbit polyclonal antibody (STJ115260) at dilution of 1:500 (40x lens).



Immunohistochemistry of paraffin-embedded human placenta using DLDH/DLDH/DLDH/DLD rabbit polyclonal antibody (STJ115260) at dilution of 1:500 (40x lens).



Immunofluorescence analysis of HeLa cells using DLDH/DLDH/DLDH/DLD antibody (STJ115260). Blue: DAPI for nuclear staining.