

Anti-LARP1B antibody (170-320) (STJ115188)

STJ115188

GENERAL INFORMATION

Product Type	Primary antibodies
Short Description	Rabbit polyclonal antibody anti-LARP1B (170-320) is suitable for use in Western Blot and Immunohistochemistry.
Applications	WB, IHC
Host/Source	Rabbit
Reactivity	Human, Mouse, Rat

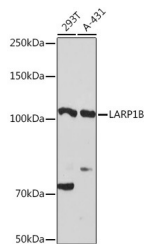
PRODUCT PROPERTIES

Clonality	Polyclonal
Clone ID	
Concentration	
Conjugation	Unconjugated
Purification	Affinity purification
Dilution Range	WB 1:500-1:2000 IHC 1:50-1:200
Formulation	PBS containing 0.02% Sodium Azide, 50% Glycerol, pH7.3.
Isotype	IgG
Storage Instruction	Store in a freezer at -20°C and avoid freeze-thaw cycles.

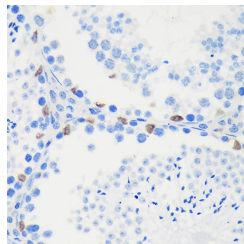
TARGET INFORMATION

Gene ID	55132
Gene Symbol	LARP1B
Uniprot ID	LAR1B_HUMAN
Immunogen	Recombinant fusion protein containing a sequence corresponding to amino acids 170-320 of human LARP1B (NP_060548.2).

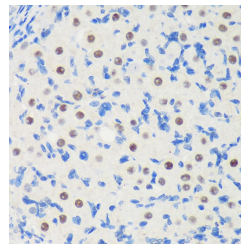
Immunogen Region
170-320
Specificity
Immunogen
Sequence



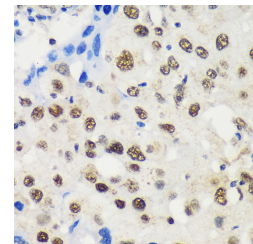
Western blot analysis of extracts of various cell lines, using LARP1B rabbit polyclonal antibody (STJ115188) at 1:3000 dilution. Secondary antibody: HRP Goat Anti-rabbit IgG (H+L) at 1:10000 dilution. Lysates/proteins: 25µg per lane. Blocking buffer: 3% nonfat dry milk in TBST. Detection: ECL Basic Kit. Exposure time: 180s.



Immunohistochemistry of paraffin-embedded mouse testis using LARP1B rabbit polyclonal antibody (STJ115188) at dilution of 1:100 (40x lens).



Immunohistochemistry of paraffin-embedded Rat ovary using LARP1B rabbit polyclonal antibody (STJ115188) at dilution of 1:100 (40x lens).



Immunohistochemistry of paraffin-embedded Human breast cancer using LARP1B rabbit polyclonal antibody (STJ115188) at dilution of 1:100 (40x lens).

This product is suitable for in-vitro studies under the RESEARCH USE ONLY [RUO] licence. This product must not be used as for diagnostic or other medical purposes.
St John's Laboratory Ltd, Knowledge Dock Business Centre, University Way, London, E16 2RD | Tel: 0208 223 3081