

Anti-MRPL45 antibody (57-306) (STJ115163)

STJ115163

GENERAL INFORMATION

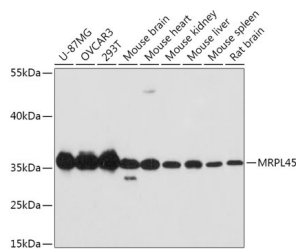
Product Type	Primary antibodies
Short Description	Rabbit polyclonal antibody anti-MRPL45 (57-306) is suitable for use in Western Blot, Immunohistochemistry and Immunofluorescence.
Applications	WB, IHC, IF
Host/Source	Rabbit
Reactivity	Human, Mouse, Rat

PRODUCT PROPERTIES

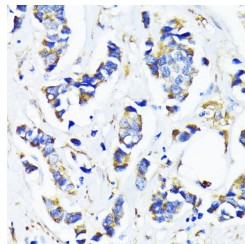
Clonality	Polyclonal
Clone ID	
Concentration	
Conjugation	Unconjugated
Purification	Affinity purification
Dilution Range	WB 1:500-1:2000 IHC 1:50-1:200 IF 1:50-1:200
Formulation	PBS containing 0.02% Sodium Azide, 50% Glycerol, pH7.3.
Isotype	IgG
Storage Instruction	Store in a freezer at -20°C and avoid freeze-thaw cycles.

TARGET INFORMATION

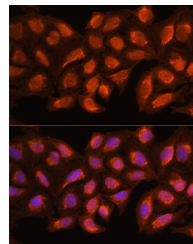
Gene ID	NA
Gene Symbol	MRPL45
Uniprot ID	RM45_HUMAN
Immunogen	Recombinant fusion protein containing a sequence corresponding to amino acids 57-306 of human MRPL45 (NP_115727.5).
Immunogen Region	57-306
Specificity	
Immunogen Sequence	



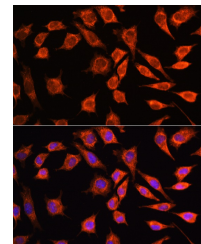
Western blot analysis of extracts of various cell lines, using MRPL45 antibody (STJ115163) at 1:1000 dilution. Secondary antibody: HRP Goat Anti-rabbit IgG (H+L) at 1:10000 dilution, lysates/proteins: 25µg per lane. Blocking buffer: 3% nonfat dry milk in TBST. Detection: ECL Basic Kit. Exposure time: 90s.



Immunohistochemistry of paraffin-embedded human breast cancer using MRPL45 antibody (STJ115163) at dilution of 1:100 (40x lens).



Immunofluorescence analysis of HeLa cells using MRPL45 rabbit polyclonal antibody (STJ115163) at dilution of 100 (40x lens). Blue: DAPI for nuclear staining.



Immunofluorescence analysis of L929 cells using MRPL45 rabbit polyclonal antibody (STJ115163) at dilution of 100 (40x lens). Blue: DAPI for nuclear staining.

This product is suitable for in-vitro studies under the RESEARCH USE ONLY [RUO] licence. This product must not be used as for diagnostic or other medical purposes.
St John's Laboratory Ltd, Knowledge Dock Business Centre, University Way, London, E16 2RD | Tel: 0208 223 3081