

Anti-IFITM3 antibody (1-133) (STJ115037)

STJ115037

GENERAL INFORMATION

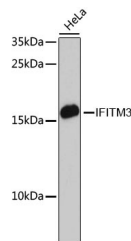
Product Type	Primary antibodies
Short Description	Rabbit polyclonal antibody anti-IFITM3 (1-133) is suitable for use in Western Blot, Immunohistochemistry and Immunofluorescence.
Applications	WB, IHC, IF
Host/Source	Rabbit
Reactivity	Human, Mouse, Rat

PRODUCT PROPERTIES

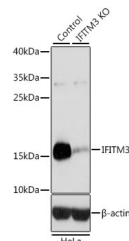
Clonality	Polyclonal
Clone ID	
Concentration	
Conjugation	Unconjugated
Purification	Affinity purification
Dilution Range	WB 1:500-1:2000 IHC 1:50-1:200 IF 1:50-1:100
Formulation	PBS containing 0.02% Sodium Azide, 50% Glycerol, pH7.3.
Isotype	IgG
Storage Instruction	Store in a freezer at -20°C and avoid freeze-thaw cycles.

TARGET INFORMATION

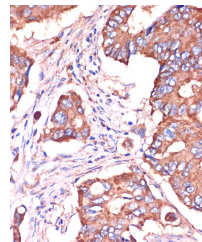
Gene ID	10410
Gene Symbol	IFITM3
Uniprot ID	IFM3_HUMAN
Immunogen	Recombinant fusion protein containing a sequence corresponding to amino acids 1-133 of human IFITM3 (NP_066362.2).
Immunogen Region	1-133
Specificity	
Immunogen Sequence	



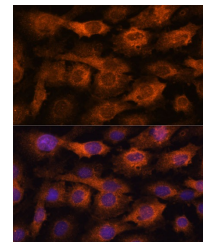
Western blot analysis of extracts of HeLa cells, using IFITM3 antibody (STJ115037) at 1:3000 dilution. Secondary antibody: HRP Goat Anti-rabbit IgG (H+L) at 1:10000 dilution. Lysates/proteins: 25ug per lane. Blocking buffer: 3% nonfat dry milk in TBST. Detection: ECL Basic Kit. Exposure time: 90s.



Western blot analysis of extracts from normal (control) and IFITM3 knockout (KO) HeLa cells, using IFITM3 antibody (STJ115037) at 1:3000 dilution. Secondary antibody: HRP Goat Anti-rabbit IgG (H+L) at 1:10000 dilution. Lysates/proteins: 25ug per lane. Blocking buffer: 3% nonfat dry milk in TBST. Detection: ECL Basic Kit. Exposure time: 1s.



Immunohistochemistry of paraffin-embedded Human colon carcinoma using [KO Validated] IFITM3 rabbit polyclonal antibody (STJ115037) at dilution of 1:100 (40x lens).



Immunofluorescence analysis of C6 cells using [KO] IFITM3 antibody (STJ115037) at dilution of 1:100. Blue: DAPI for nuclear staining.

This product is suitable for in-vitro studies under the RESEARCH USE ONLY [RUO] licence. This product must not be used as for diagnostic or other medical purposes.
St John's Laboratory Ltd, Knowledge Dock Business Centre, University Way, London, E16 2RD | Tel: 0208 223 3081