

Anti-IGF2R antibody (2327-2491) (STJ114989)

STJ114989

GENERAL INFORMATION

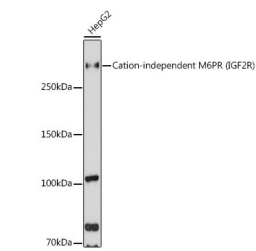
Product Type	Primary antibodies
Short Description	Rabbit polyclonal antibody anti-IGF2R (2327-2491) is suitable for use in Western Blot, Immunohistochemistry and Immunofluorescence.
Applications	WB, IHC, IF
Host/Source	Rabbit
Reactivity	Human, Mouse, Rat

PRODUCT PROPERTIES

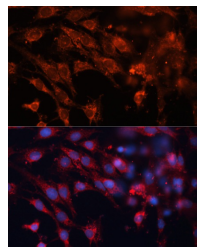
Clonality	Polyclonal
Clone ID	
Concentration	
Conjugation	Unconjugated
Purification	Affinity purification
Dilution Range	WB 1:500-1:2000 IHC 1:50-1:200 IF 1:50-1:200
Formulation	PBS containing 0.02% Sodium Azide, 50% Glycerol, pH7.3.
Isotype	IgG
Storage	Store in a freezer at -20°C and avoid freeze-thaw cycles.
Instruction	

TARGET INFORMATION

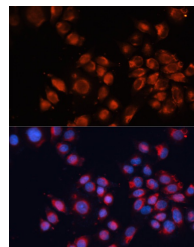
Gene ID	3482
Gene Symbol	IGF2R
Uniprot ID	MPRI_HUMAN
Immunogen	Recombinant fusion protein containing a sequence corresponding to amino acids 2327-2491 of human Cation-independent M6PR (Cation-independent M6PR (IGF2R)) (NP_000867.2).
Immunogen Region	2327-2491
Specificity	
Immunogen Sequence	



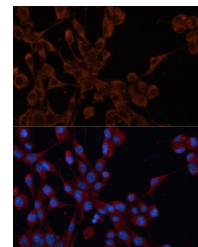
Western blot analysis of extracts of HepG2 cells, using Cation-independent M6PR (Cation-independent M6PR (IGF2R)) antibody (STJ114989) at 1:1000 dilution. Secondary antibody: HRP Goat Anti-rabbit IgG (H+L) at 1:10000 dilution. Lysates/proteins: 25µg per lane. Blocking buffer: 3% nonfat dry milk in TBST. Detection: ECL Basic Kit. Exposure time: 60s.



Immunofluorescence analysis of C6 cells using Cation-independent M6PR (Cation-independent M6PR (IGF2R)) antibody (STJ114989) at dilution of 1:100. Blue: DAPI for nuclear staining.



Immunofluorescence analysis of HeLa cells using Cation-independent M6PR (Cation-independent M6PR (IGF2R)) antibody (STJ114989) at dilution of 1:100. Blue: DAPI for nuclear staining.



Immunofluorescence analysis of NIH/3T3 cells using Cation-independent M6PR (Cation-independent M6PR (IGF2R)) antibody (STJ114989) at dilution of 1:100. Blue: DAPI for nuclear staining.

This product is suitable for in-vitro studies under the RESEARCH USE ONLY [RUO] licence. This product must not be used as for diagnostic or other medical purposes.

St John's Laboratory Ltd, Knowledge Dock Business Centre, University Way, London, E16 2RD | Tel: 0208 223 3081