

Anti-ELANE antibody (30-267) (STJ114982)

STJ114982

GENERAL INFORMATION

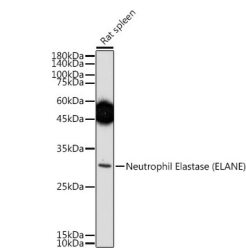
Product Type	Primary antibodies
Short Description	Rabbit polyclonal antibody anti-ELANE (30-267) is suitable for use in Western Blot and Immunofluorescence.
Applications	WB, IF
Host/Source	Rabbit
Reactivity	Human, Mouse, Rat

PRODUCT PROPERTIES

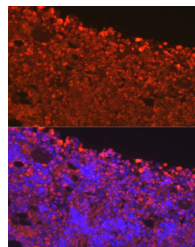
Clonality	Polyclonal
Clone ID	
Concentration	
Conjugation	Unconjugated
Purification	Affinity purification
Dilution Range	WB 1:500-1:2000 IF 1:50-1:200
Formulation	PBS containing 0.02% Sodium Azide, 50% Glycerol, pH7.3.
Isotype	IgG
Storage Instruction	Store in a freezer at -20°C and avoid freeze-thaw cycles.

TARGET INFORMATION

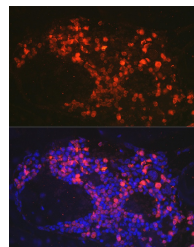
Gene ID	1991
Gene Symbol	ELANE
Uniprot ID	ELNE_HUMAN
Immunogen	Recombinant fusion protein containing a sequence corresponding to amino acids 30-267 of human Neutrophil Elastase (ELANE) (NP_001963.1).
Immunogen Region	30-267
Specificity	
Immunogen Sequence	



Western blot analysis of extracts of Rat spleen, using Neutrophil Elastase (ELANE) antibody (STJ114982) at 1:500 dilution. Secondary antibody: HRP Goat Anti-rabbit IgG (H+L) at 1:10000 dilution. Lysates/proteins: 25ug per lane. Blocking buffer: 3% nonfat dry milk in TBST. Detection: ECL Enhanced Kit. Exposure time: 180s.



Immunofluorescence analysis of rat bone marrow using Neutrophil Elastase (ELANE) rabbit polyclonal antibody (STJ114982) at dilution of 1:100 (40x lens). Blue: DAPI for nuclear staining.



Immunofluorescence analysis of mouse bone marrow using Neutrophil Elastase (ELANE) rabbit polyclonal antibody (STJ114982) at dilution of 1:100 (40x lens). Blue: DAPI for nuclear staining.

This product is suitable for in-vitro studies under the RESEARCH USE ONLY [RUO] licence. This product must not be used as for diagnostic or other medical purposes.

St John's Laboratory Ltd, Knowledge Dock Business Centre, University Way, London, E16 2RD | Tel: 0208 223 3081