

Anti-CD8A antibody (22-182) (STJ114922)

STJ114922

GENERAL INFORMATION

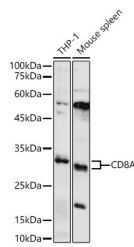
Product Type	Primary antibodies
Short Description	Rabbit polyclonal antibody anti-CD8A (22-182) is suitable for use in Western Blot and Immunohistochemistry.
Applications	WB, IHC
Host/Source	Rabbit
Reactivity	Human, Mouse, Rat

PRODUCT PROPERTIES

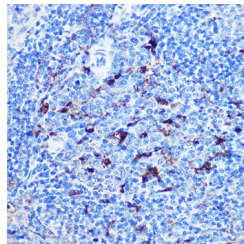
Clonality	Polyclonal
Clone ID	
Concentration	
Conjugation	Unconjugated
Purification	Affinity purification
Dilution Range	WB 1:500-1:2000 IHC 1:50-1:200
Formulation	PBS containing 0.02% Sodium Azide, 50% Glycerol, pH7.3.
Isotype	IgG
Storage Instruction	Store in a freezer at -20°C and avoid freeze-thaw cycles.

TARGET INFORMATION

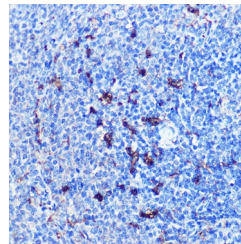
Gene ID	925
Gene Symbol	CD8A
Uniprot ID	CD8A_HUMAN
Immunogen	Recombinant fusion protein containing a sequence corresponding to amino acids 22-182 of human CD8A (NP_001759.3).
Immunogen Region	22-182
Specificity	
Immunogen Sequence	



Western blot analysis of extracts of various cell lines, using CD8A antibody (STJ114922) at 1:500 dilution. Secondary antibody: HRP-Coat Anti-rabbit IgG (H+L) at 1:10000 dilution. Lysates/proteins: 25ug per lane. Blocking buffer: 3% nonfat dry milk in TBST. Detection: ECL Basic Kit. Exposure time: 180s.



Immunohistochemistry of paraffin-embedded mouse spleen using CD8A rabbit polyclonal antibody (STJ114922) at dilution of 1:100 (40x lens).



Immunohistochemistry of paraffin-embedded rat spleen using CD8A rabbit polyclonal antibody (STJ114922) at dilution of 1:100 (40x lens).

This product is suitable for in-vitro studies under the RESEARCH USE ONLY [RUO] licence. This product must not be used as for diagnostic or other medical purposes.
St John's Laboratory Ltd, Knowledge Dock Business Centre, University Way, London, E16 2RD | Tel: 0208 223 3081