

## Anti-ACTA2 antibody (1-124) (STJ114915)

STJ114915

### GENERAL INFORMATION

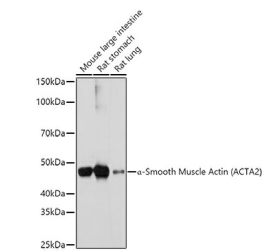
|                          |   |
|--------------------------|---|
| <b>Product Type</b>      | Primary antibodies  |
| <b>Short Description</b> | Rabbit polyclonal antibody anti-alpha smooth muscle actin (1-124) is suitable for use in Western Blot, Immunohistochemistry and Immunofluorescence. |
| <b>Applications</b>      | WB, IHC, IF   |
| <b>Host/Source</b>       | Rabbit  |
| <b>Reactivity</b>        | Human, Mouse, Rat   |

### PRODUCT PROPERTIES

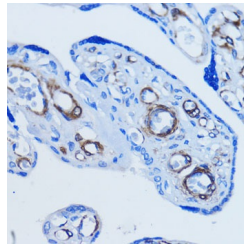
|                       |   |
|-----------------------|---|
| <b>Clonality</b>      | Polyclonal  |
| <b>Clone ID</b>       |   |
| <b>Concentration</b>  |   |
| <b>Conjugation</b>    | Unconjugated  |
| <b>Purification</b>   | Affinity purification                                     |
| <b>Dilution Range</b> | WB 1:500-1:1000<br>IHC 1:50-1:100<br>IF 1:100-1:200       |
| <b>Formulation</b>    | PBS containing 0.02% Sodium Azide, 50% Glycerol, pH7.3.   |
| <b>Isotype</b>        | IgG   |
| <b>Storage</b>        | Store in a freezer at -20°C and avoid freeze-thaw cycles. |
| <b>Instruction</b>    |   |

### TARGET INFORMATION

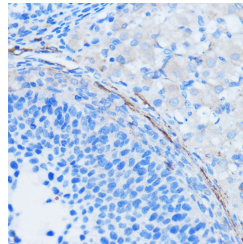
|                           |  |
|---------------------------|--|
| <b>Gene ID</b>            | 59   |
| <b>Gene Symbol</b>        | ACTA2  |
| <b>Uniprot ID</b>         | ACTA_HUMAN   |
| <b>Immunogen</b>          | Recombinant fusion protein containing a sequence corresponding to amino acids 1-124 of human Alpha-Smooth Muscle Actin (ACTA2) (NP_001135417.1). |
| <b>Immunogen Region</b>   | 1-124  |
| <b>Specificity</b>        |  |
| <b>Immunogen Sequence</b> |  |



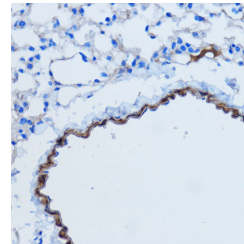
Western blot analysis of extracts of various cell lines, using Alpha-Smooth Muscle Actin (ACTA2) antibody (STJ114915) at 1:500 dilution. Secondary antibody: HRP Goat Anti-rabbit IgG (H+L) at 1:10000 dilution. Lysates/proteins: 25ug per lane. Blocking buffer: 3% nonfat dry milk in TBST. Detection: ECL Basic Kit. Exposure time: 1s.



Immunohistochemistry of paraffin-embedded human placenta using Alpha-Smooth Muscle Actin (ACTA2) antibody (STJ114915) at dilution of 1:100 (40x lens). Perform microwave antigen retrieval with 10 mM PBS buffer pH 7.2 before commencing with immunohistochemistry staining protocol.



Immunohistochemistry of paraffin-embedded rat ovary using Alpha-Smooth Muscle Actin (ACTA2) antibody (STJ114915) at dilution of 1:100 (40x lens). Perform microwave antigen retrieval with 10 mM PBS buffer pH 7.2 before commencing with immunohistochemistry staining protocol.



Immunohistochemistry of paraffin-embedded mouse lung using Alpha-Smooth Muscle Actin (ACTA2) antibody (STJ114915) at dilution of 1:100 (40x lens). Perform microwave antigen retrieval with 10 mM PBS buffer pH 7.2 before commencing with immunohistochemistry staining protocol.

This product is suitable for in-vitro studies under the RESEARCH USE ONLY [RUO] licence. This product must not be used as for diagnostic or other medical purposes.

St John's Laboratory Ltd, Knowledge Dock Business Centre, University Way, London, E16 2RD | Tel: 0208 223 3081