

Anti-MECP2 antibody (1-280) (STJ114895)

STJ114895

GENERAL INFORMATION

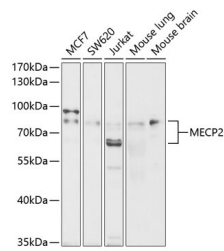
| | |
|--------------------------|---|
| Product Type | Primary antibodies |
| Short Description | Rabbit polyclonal antibody anti-MECP2 (1-280) is suitable for use in Western Blot and Immunohistochemistry. |
| Applications | WB, IHC |
| Host/Source | Rabbit |
| Reactivity | Human, Mouse |

PRODUCT PROPERTIES

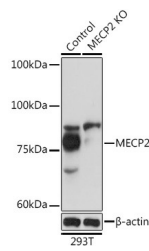
| | |
|----------------------------|---|
| Clonality | Polyclonal |
| Clone ID | |
| Concentration | |
| Conjugation | Unconjugated |
| Purification | Affinity purification |
| Dilution Range | WB 1:500-1:1000 IHC 1:50-1:100 |
| Formulation | PBS containing 0.02% Sodium Azide, 50% Glycerol, pH7.3. |
| Isotype | IgG |
| Storage Instruction | Store in a freezer at -20°C and avoid freeze-thaw cycles. |

TARGET INFORMATION

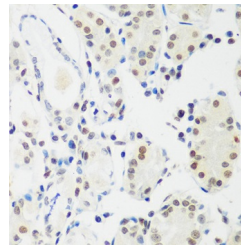
| | |
|---------------------------|---|
| Gene ID | 4204 |
| Gene Symbol | MECP2 |
| Uniprot ID | MECP2_HUMAN |
| Immunogen | Recombinant fusion protein containing a sequence corresponding to amino acids 1-280 of human MECP2 (NP_004983.1). |
| Immunogen Region | 1-280 |
| Specificity | |
| Immunogen Sequence | |



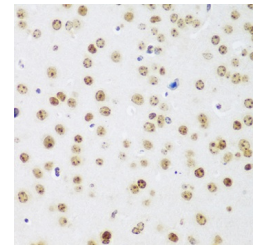
Western blot analysis of extracts of various cell lines, using MECP2 antibody (STJ114895) at 1:1000 dilution. Secondary antibody: HRP Goat Anti-rabbit IgG (H+L) at 1:10000 dilution. Lysates/proteins: 25ug per lane. Blocking buffer: 3% nonfat dry milk in TBST. Detection: ECL Basic Kit. Exposure time: 30s.



Western blot analysis of extracts from normal (control) and MECP2 rabbit polyclonal antibody knockout (KO) 293T cells, using MECP2 rabbit polyclonal antibody (STJ114895) at 1:1000 dilution. Secondary antibody: HRP Goat Anti-rabbit IgG (H+L) at 1:10000 dilution. Lysates/proteins: 25ug per lane. Blocking buffer: 3% nonfat dry milk in TBST. Detection: ECL Basic Kit. Exposure time: 1s.



Immunohistochemistry of paraffin-embedded human gastric cancer using MECP2 antibody (STJ114895) at dilution of 1:100 (40x lens).



Immunohistochemistry of paraffin-embedded mouse brain using MECP2 antibody (STJ114895) at dilution of 1:100 (40x lens).

This product is suitable for in-vitro studies under the RESEARCH USE ONLY [RUO] licence. This product must not be used as for diagnostic or other medical purposes.

St John's Laboratory Ltd, Knowledge Dock Business Centre, University Way, London, E16 2RD | Tel: 0208 223 3081