

## Anti-CD4 antibody (26-200) (STJ114878)

STJ114878

### GENERAL INFORMATION

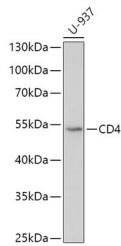
<b>Product Type</b>	Primary antibodies
<b>Short Description</b>	Rabbit polyclonal antibody anti-CD4 (26-200) is suitable for use in Western Blot and Immunofluorescence.
<b>Applications</b>	WB, IF
<b>Host/Source</b>	Rabbit
<b>Reactivity</b>	Human, Mouse, Rat

### PRODUCT PROPERTIES

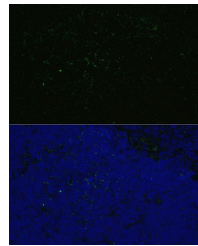
<b>Clonality</b>	Polyclonal
<b>Clone ID</b>	
<b>Concentration</b>	
<b>Conjugation</b>	Unconjugated
<b>Purification</b>	Affinity purification
<b>Dilution Range</b>	WB 1:500-1:2000 IF 1:50-1:200
<b>Formulation</b>	PBS containing 0.02% Sodium Azide, 50% Glycerol, pH7.3.
<b>Isotype</b>	IgG
<b>Storage Instruction</b>	Store in a freezer at -20°C and avoid freeze-thaw cycles.

### TARGET INFORMATION

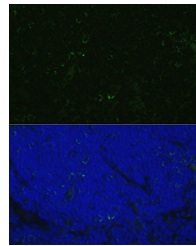
<b>Gene ID</b>	920
<b>Gene Symbol</b>	CD4
<b>Uniprot ID</b>	CD4_HUMAN
<b>Immunogen</b>	Recombinant fusion protein containing a sequence corresponding to amino acids 26-200 of human CD4 (NP_000607.1).
<b>Immunogen Region</b>	26-200
<b>Specificity</b>	
<b>Immunogen Sequence</b>	



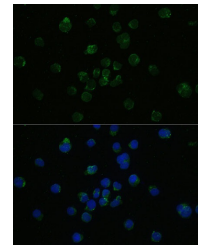
Western blot analysis of extracts of U-937 cells, using CD4 antibody (STJ114878) at 1:500 dilution. Secondary antibody: HRP-Coat Anti-rabbit IgG (H+L) at 1:10000 dilution. Lysates/proteins: 25ug per lane. Blocking buffer: 3% nonfat dry milk in TBST. Detection: ECL Basic Kit. Exposure time: 30s.



Immunofluorescence analysis of mouse thymus using CD4 antibody (STJ114878) at dilution of 1:100. Blue: DAPI for nuclear staining.



Immunofluorescence analysis of Rat thymus cells using CD4 antibody (STJ114878) at dilution of 1:100. Blue: DAPI for nuclear staining.



Immunofluorescence analysis of Jurkat cells using CD4 antibody (STJ114878) at dilution of 1:100. Blue: DAPI for nuclear staining.

This product is suitable for in-vitro studies under the RESEARCH USE ONLY [RUO] licence. This product must not be used as for diagnostic or other medical purposes.  
St John's Laboratory Ltd, Knowledge Dock Business Centre, University Way, London, E16 2RD | Tel: 0208 223 3081