

Anti-MST1 antibody (200-500) (STJ114829)

STJ114829

GENERAL INFORMATION

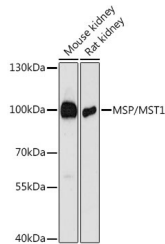
Product Type	Primary antibodies
Short Description	Rabbit polyclonal antibody anti-MST1 (200-500) is suitable for use in Western Blot, Immunohistochemistry and Immunofluorescence.
Applications	WB, IHC, IF
Host/Source	Rabbit
Reactivity	Human, Mouse, Rat

PRODUCT PROPERTIES

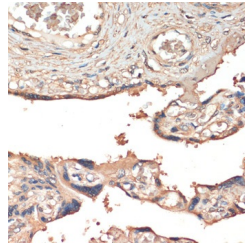
Clonality	Polyclonal
Clone ID	
Concentration	
Conjugation	Unconjugated
Purification	Affinity purification
Dilution Range	WB 1:500-1:2000 IHC 1:50-1:200 IF 1:50-1:200
Formulation	PBS containing 0.02% Sodium Azide, 50% Glycerol, pH7.3.
Isotype	IgG
Storage Instruction	Store in a freezer at -20°C and avoid freeze-thaw cycles.

TARGET INFORMATION

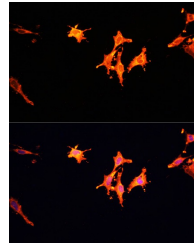
Gene ID	4485
Gene Symbol	MST1
Uniprot ID	HGFL_HUMAN
Immunogen	Recombinant fusion protein containing a sequence corresponding to amino acids 200-500 of human MSP/MST1 (NP_066278.3).
Immunogen Region	200-500
Specificity	
Immunogen Sequence	



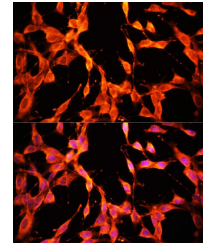
Western blot analysis of extracts of various cell lines using MSP/MST1 antibody (STJ114829) at 1:3000 dilution. Secondary antibody: HRP Goat Anti-rabbit IgG (H+L) at 1:10000 dilution. Lysates/proteins: 25ug per lane. Blocking buffer: 3% nonfat dry milk in TBST. Detection: ECL Basic Kit. Exposure time: 90s.



Immunohistochemistry of paraffin-embedded human placenta using MSP/MST1 antibody (STJ114829) at dilution of 1:200 (40x lens).



Immunofluorescence analysis of C6 cells using MSP/MST1 antibody (STJ114829) at dilution of 1:100. Blue: DAPI for nuclear staining.



Immunofluorescence analysis of NIH/3T3 cells using MSP/MST1 antibody (STJ114829) at dilution of 1:100. Blue: DAPI for nuclear staining.