

Anti-SLC17A7 antibody (461-560) (STJ114745)

STJ114745

GENERAL INFORMATION

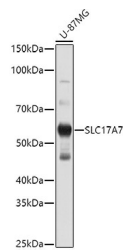
Product Type	Primary antibodies
Short Description	Rabbit polyclonal antibody anti-SLC17A7 (461-560) is suitable for use in Western Blot.
Applications	WB
Host/Source	Rabbit
Reactivity	Human

PRODUCT PROPERTIES

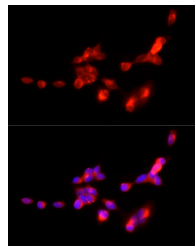
Clonality	Polyclonal
Clone ID	
Concentration	
Conjugation	Unconjugated
Purification	Affinity purification
Dilution Range	WB 1:200-1:2000
Formulation	PBS containing 0.02% Sodium Azide, 50% Glycerol, pH7.3.
Isotype	IgG
Storage Instruction	Store in a freezer at -20°C and avoid freeze-thaw cycles.

TARGET INFORMATION

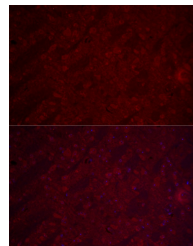
Gene ID	57030
Gene Symbol	SLC17A7
Uniprot ID	VGLU1_HUMAN
Immunogen	Recombinant fusion protein containing a sequence corresponding to amino acids 461-560 of human SLC17A7 (NP_064705.1).
Immunogen Region	461-560
Specificity	
Immunogen Sequence	



Western blot analysis of extracts of U-87MG cells, using SLC17A7 antibody (STJ114745) at 1:1000 dilution. Secondary antibody: HRP Goat Anti-rabbit IgG (H+L) at 1:10000 dilution. Lysates/proteins: 25ug per lane. Blocking buffer: 3% nonfat dry milk in TBST. Detection: ECL Basic Kit. Exposure time: 10s.



Immunofluorescence analysis of SH-SY5Y cells using SLC17A7 rabbit polyclonal antibody (STJ114745) at dilution of 1:250 (40x lens). Blue: DAPI for nuclear staining.



Immunofluorescence analysis of mouse brain cells using SLC17A7 rabbit polyclonal antibody (STJ114745) at dilution of 1:250 (40x lens). Blue: DAPI for nuclear staining.

This product is suitable for in-vitro studies under the RESEARCH USE ONLY [RUO] licence. This product must not be used as for diagnostic or other medical purposes.
 St John's Laboratory Ltd, Knowledge Dock Business Centre, University Way, London, E16 2RD | Tel: 0208 223 3081