

Anti-RCOR1 antibody (256-485) (STJ114711)

STJ114711

GENERAL INFORMATION

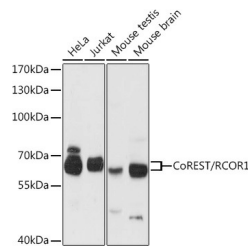
| | |
|--------------------------|--|
| Product Type | Primary antibodies |
| Short Description | Rabbit polyclonal antibody anti-RCOR1 (256-485) is suitable for use in Western Blot, Immunofluorescence and Immunoprecipitation. |
| Applications | WB, IF, IP |
| Host/Source | Rabbit |
| Reactivity | Human, Mouse |

PRODUCT PROPERTIES

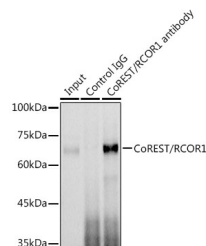
| | |
|----------------------------|---|
| Clonality | Polyclonal |
| Clone ID | |
| Concentration | |
| Conjugation | Unconjugated |
| Purification | Affinity purification |
| Dilution Range | WB 1:500-1:2000 IF 1:50-1:200 IP 1:50-1:200 |
| Formulation | PBS containing 0.02% Sodium Azide, 50% Glycerol, pH7.3. |
| Isotype | IgG |
| Storage Instruction | Store in a freezer at -20°C and avoid freeze-thaw cycles. |

TARGET INFORMATION

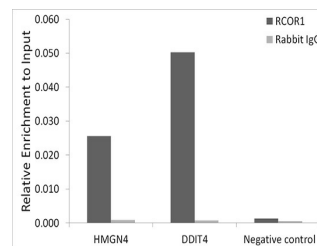
| | |
|---------------------------|---|
| Gene ID | 23186 |
| Gene Symbol | RCOR1 |
| Uniprot ID | RCOR1_HUMAN |
| Immunogen | Recombinant fusion protein containing a sequence corresponding to amino acids 256-485 of human CoREST/CoREST/RCOR1 (NP_055971.2). |
| Immunogen Region | 256-485 |
| Specificity | |
| Immunogen Sequence | |



Western blot analysis of extracts of various cell lines, using CoREST/CoREST/RCOR1 antibody (STJ114711) at 1:3000 dilution. Secondary antibody: HRP Goat Anti-rabbit IgG (H+L) at 1:10000 dilution. Lysates/proteins: 25ug per lane. Blocking buffer: 3% nonfat dry milk in TBST. Detection: ECL Basic Kit. Exposure time: 30s.



Immunoprecipitation analysis of 300ug extracts of Jurkat cells using 3ug CoREST/RCOR1 antibody (STJ114711). Western blot was performed from the immunoprecipitate using CoREST/RCOR1 antibody (STJ114711) at a dilution of 1:1000.



Chromatin immunoprecipitation analysis of extracts of HepG2 cells, using CoREST/RCOR1 antibody (STJ114711) and rabbit IgG. The amount of immunoprecipitated DNA was checked by quantitative PCR. Histogram was constructed by the ratios of the immunoprecipitated DNA to the input.