

Anti-CD248 antibody (18-150) (STJ114579)

STJ114579

GENERAL INFORMATION

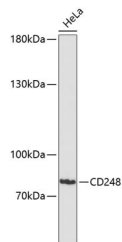
Product Type	Primary antibodies
Short Description	Rabbit polyclonal antibody anti-CD248 (18-150) is suitable for use in Western Blot.
Applications	WB
Host/Source	Rabbit
Reactivity	Human

PRODUCT PROPERTIES

Clonality	Polyclonal
Clone ID	
Concentration	
Conjugation	Unconjugated
Purification	Affinity purification
Dilution Range	WB 1:500-1:2000
Formulation	PBS containing 0.02% Sodium Azide, 50% Glycerol, pH7.3.
Isotype	IgG
Storage Instruction	Store in a freezer at -20°C and avoid freeze-thaw cycles.

TARGET INFORMATION

Gene ID	57124
Gene Symbol	CD248
Uniprot ID	CD248_HUMAN
Immunogen	Recombinant fusion protein containing a sequence corresponding to amino acids 18-150 of human CD248 (NP_065137.1).
Immunogen Region	18-150
Specificity	
Immunogen Sequence	



Western blot analysis of extracts of HeLa cells, using CD248 antibody (STJ114579) at 1:3000 dilution. Secondary antibody: HRP Goat Anti-rabbit IgG (H+L) at 1:10000 dilution. Lysates/proteins: 25µg per lane. Blocking buffer: 3% nonfat dry milk in TBST. Detection: ECL Enhanced Kit. Exposure time: 90s.

This product is suitable for in-vitro studies under the RESEARCH USE ONLY [RUO] licence. This product must not be used as for diagnostic or other medical purposes.

St John's Laboratory Ltd, Knowledge Dock Business Centre, University Way, London, E16 2RD | Tel: 0208 223 3081