

## Anti-JADE1 antibody (210-509) (STJ114453)

STJ114453

### GENERAL INFORMATION

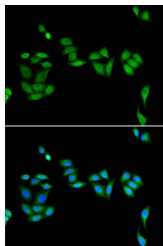
<b>Product Type</b>	Primary antibodies
<b>Short Description</b>	Rabbit polyclonal antibody anti-JADE1 (210-509) is suitable for use in Immunohistochemistry and Immunofluorescence.
<b>Applications</b>	IHC, IF
<b>Host/Source</b>	Rabbit
<b>Reactivity</b>	Human, Mouse

### PRODUCT PROPERTIES

<b>Clonality</b>	Polyclonal
<b>Clone ID</b>	
<b>Concentration</b>	
<b>Conjugation</b>	Unconjugated
<b>Purification</b>	Affinity purification
<b>Dilution Range</b>	IHC 1:50-1:100 IF 1:50-1:100
<b>Formulation</b>	PBS containing 0.02% Sodium Azide, 50% Glycerol, pH7.3.
<b>Isotype</b>	IgG
<b>Storage Instruction</b>	Store in a freezer at -20°C and avoid freeze-thaw cycles.

### TARGET INFORMATION

<b>Gene ID</b>	79960
<b>Gene Symbol</b>	JADE1
<b>Uniprot ID</b>	JADE1_HUMAN
<b>Immunogen</b>	Recombinant fusion protein containing a sequence corresponding to amino acids 210-509 of human JADE1 (NP_079176.2).
<b>Immunogen Region</b>	210-509
<b>Specificity</b>	
<b>Immunogen Sequence</b>	



Immunofluorescence analysis of U2OS cells using JADE1 antibody (STJ114453). Blue: DAPI for nuclear staining.