

## Anti-TUSC3 antibody (42-200) (STJ114445)

STJ114445

### GENERAL INFORMATION

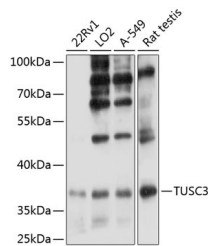
<b>Product Type</b>	Primary antibodies
<b>Short Description</b>	Rabbit polyclonal antibody anti-TUSC3 (42-200) is suitable for use in Western Blot.
<b>Applications</b>	WB
<b>Host/Source</b>	Rabbit
<b>Reactivity</b>	Human, Rat

### PRODUCT PROPERTIES

<b>Clonality</b>	Polyclonal
<b>Clone ID</b>	
<b>Concentration</b>	
<b>Conjugation</b>	Unconjugated
<b>Purification</b>	Affinity purification
<b>Dilution Range</b>	WB 1:500-1:2000
<b>Formulation</b>	PBS containing 0.02% Sodium Azide, 50% Glycerol, pH7.3.
<b>Isotype</b>	IgG
<b>Storage Instruction</b>	Store in a freezer at -20°C and avoid freeze-thaw cycles.

### TARGET INFORMATION

<b>Gene ID</b>	7991
<b>Gene Symbol</b>	TUSC3
<b>Uniprot ID</b>	TUSC3_HUMAN
<b>Immunogen</b>	Recombinant fusion protein containing a sequence corresponding to amino acids 42-200 of human TUSC3 (NP_839952.1).
<b>Immunogen Region</b>	42-200
<b>Specificity</b>	
<b>Immunogen Sequence</b>	



Western blot analysis of extracts of various cell lines, using TUSC3 antibody (STJ114445) at 1:3000 dilution.  
 \_Secondary antibody: HRP Goat Anti-rabbit IgG (H+L) at 1:10000 dilution. \_Lysates/proteins: 25ug per lane.  
 \_Blocking buffer: 3% nonfat dry milk in TBST.  
 \_Detection: ECL Enhanced Kit. \_Exposure time: 10s.

This product is suitable for in-vitro studies under the RESEARCH USE ONLY [RUO] licence. This product must not be used as for diagnostic or other medical purposes.  
 St John's Laboratory Ltd, Knowledge Dock Business Centre, University Way, London, E16 2RD | Tel: 0208 223 3081