

Anti-KLK11 antibody (1-250) (STJ114439)

STJ114439

GENERAL INFORMATION

Product Type	Primary antibodies
Short Description	Rabbit polyclonal antibody anti-KLK11 (1-250) is suitable for use in Western Blot and Immunohistochemistry.
Applications	WB, IHC
Host/Source	Rabbit
Reactivity	Human, Mouse, Rat

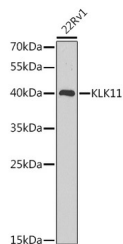
PRODUCT PROPERTIES

Clonality	Polyclonal
Clone ID	
Concentration	
Conjugation	Unconjugated
Purification	Affinity purification
Dilution Range	WB 1:500-1:2000 IHC 1:50-1:100
Formulation	PBS containing 0.02% Sodium Azide, 50% Glycerol, pH7.3.
Isotype	IgG
Storage Instruction	Store in a freezer at -20°C and avoid freeze-thaw cycles.

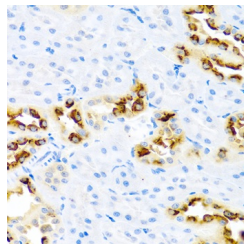
TARGET INFORMATION

Gene ID	11012
Gene Symbol	KLK11
Uniprot ID	KLK11_HUMAN
Immunogen	Recombinant fusion protein containing a sequence corresponding to amino acids 1-250 of human KLK11 (NP_001129504.1).

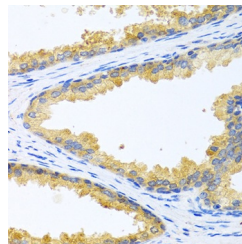
Immunogen Region
1-250
Specificity
Immunogen
Sequence



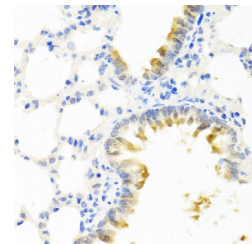
Western blot analysis of extracts of 22Rv1 cells, using KLK11 antibody (STJ114439) at 1:1000 dilution. Secondary antibody: HRP Goat Anti-rabbit IgG (H+L) at 1:10000 dilution. Lysates/proteins: 25ug per lane. Blocking buffer: 3% nonfat dry milk in TBST. Detection: ECL Enhanced Kit. Exposure time: 20s.



Immunohistochemistry of paraffin-embedded rat kidney using KLK11 antibody (STJ114439) at dilution of 1:100 (40x lens).



Immunohistochemistry of paraffin-embedded human prostate using KLK11 antibody (STJ114439) at dilution of 1:100 (40x lens).



Immunohistochemistry of paraffin-embedded mouse lung using KLK11 antibody (STJ114439) at dilution of 1:100 (40x lens).

This product is suitable for in-vitro studies under the RESEARCH USE ONLY [RUO] licence. This product must not be used as for diagnostic or other medical purposes.
St John's Laboratory Ltd, Knowledge Dock Business Centre, University Way, London, E16 2RD | Tel: 0208 223 3081