

Anti-MAD2L2 antibody (1-211) (STJ114433)

STJ114433

GENERAL INFORMATION

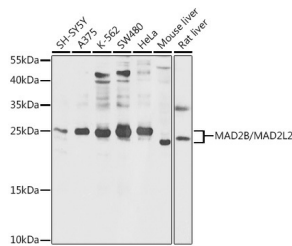
Product Type	Primary antibodies
Short Description	Rabbit polyclonal antibody anti-MAD2L2 (1-211) is suitable for use in Western Blot and Immunofluorescence.
Applications	WB, IF
Host/Source	Rabbit
Reactivity	Human, Mouse, Rat

PRODUCT PROPERTIES

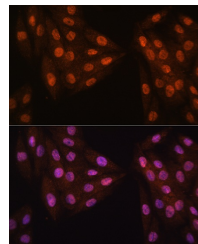
Clonality	Polyclonal
Clone ID	
Concentration	
Conjugation	Unconjugated
Purification	Affinity purification
Dilution Range	WB 1:500-1:2000 IF 1:50-1:200
Formulation	PBS containing 0.02% Sodium Azide, 50% Glycerol, pH7.3.
Isotype	IgG
Storage Instruction	Store in a freezer at -20°C and avoid freeze-thaw cycles.

TARGET INFORMATION

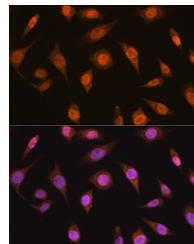
Gene ID	10459
Gene Symbol	MAD2L2
Uniprot ID	MD2L2_HUMAN
Immunogen	Recombinant fusion protein containing a sequence corresponding to amino acids 1-211 of human MAD2B/MAD2B/MAD2L2 (NP_006332.3).
Immunogen Region	1-211
Specificity	
Immunogen Sequence	



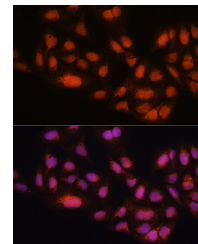
Western blot analysis of extracts of various cell lines, using MAD2B/MAD2B/MAD2L2 antibody (STJ114433) at 1:1000 dilution. Secondary antibody: HRP Goat Anti-rabbit IgG (H+L) at 1:10000 dilution. Lysates/proteins: 25µg per lane. Blocking buffer: 3% nonfat dry milk in TBST. Detection: ECL Basic Kit. Exposure time: 5s.



Immunofluorescence analysis of H9C2 cells using MAD2B/MAD2B/MAD2L2 antibody (STJ114433) at dilution of 1:100. Blue: DAPI for nuclear staining.



Immunofluorescence analysis of L929 cells using MAD2B/MAD2B/MAD2L2 antibody (STJ114433) at dilution of 1:100. Blue: DAPI for nuclear staining.



Immunofluorescence analysis of U2OS cells using MAD2B/MAD2B/MAD2L2 antibody (STJ114433) at dilution of 1:100. Blue: DAPI for nuclear staining.

This product is suitable for in-vitro studies under the RESEARCH USE ONLY [RUO] licence. This product must not be used as for diagnostic or other medical purposes.
St John's Laboratory Ltd, Knowledge Dock Business Centre, University Way, London, E16 2RD | Tel: 0208 223 3081