

Anti-S100A12 antibody (1-92) (STJ114373)

STJ114373

GENERAL INFORMATION

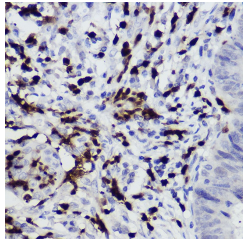
| | |
|--------------------------|---|
| Product Type | Primary antibodies |
| Short Description | Rabbit polyclonal antibody anti-S100A12 (1-92) is suitable for use in Immunohistochemistry. |
| Applications | IHC |
| Host/Source | Rabbit |
| Reactivity | Human |

PRODUCT PROPERTIES

| | |
|----------------------------|---|
| Clonality | Polyclonal |
| Clone ID | |
| Concentration | |
| Conjugation | Unconjugated |
| Purification | Affinity purification |
| Dilution Range | IHC 1:50-1:100 |
| Formulation | PBS containing 0.02% Sodium Azide, 50% Glycerol, pH7.3. |
| Isotype | IgG |
| Storage Instruction | Store in a freezer at -20°C and avoid freeze-thaw cycles. |

TARGET INFORMATION

| | |
|---------------------------|--|
| Gene ID | 6283 |
| Gene Symbol | S100A12 |
| Uniprot ID | S10AC_HUMAN |
| Immunogen | Recombinant fusion protein containing a sequence corresponding to amino acids 1-92 of human S100A12 (NP_005612.1). |
| Immunogen Region | 1-92 |
| Specificity | |
| Immunogen Sequence | |



Immunohistochemistry of paraffin-embedded human colon carcinoma using S100A12 rabbit polyclonal antibody (STJ114373) at dilution of 1:300 (40x lens).

This product is suitable for in-vitro studies under the RESEARCH USE ONLY [RUO] licence. This product must not be used as for diagnostic or other medical purposes.
St John's Laboratory Ltd, Knowledge Dock Business Centre, University Way, London, E16 2RD | Tel: 0208 223 3081