

## Anti-SERPINA1 antibody (25-315) (STJ114355)

STJ114355

### GENERAL INFORMATION

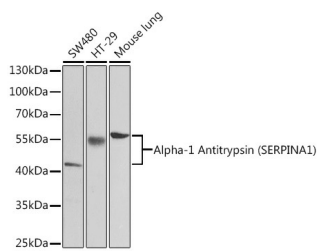
|                          |   |
|--------------------------|---|
| <b>Product Type</b>      | Primary antibodies  |
| <b>Short Description</b> | Rabbit polyclonal antibody anti-SERPINA1 (25-315) is suitable for use in Western Blot, Immunohistochemistry and Immunofluorescence. |
| <b>Applications</b>      | WB, IHC, IF   |
| <b>Host/Source</b>       | Rabbit  |
| <b>Reactivity</b>        | Human, Mouse, Rat   |

### PRODUCT PROPERTIES

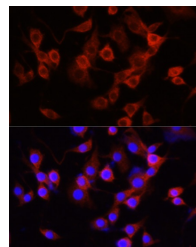
|                       |   |
|-----------------------|---|
| <b>Clonality</b>      | Polyclonal  |
| <b>Clone ID</b>       |   |
| <b>Concentration</b>  |   |
| <b>Conjugation</b>    | Unconjugated  |
| <b>Purification</b>   | Affinity purification                                     |
| <b>Dilution Range</b> | WB 1:500-1:2000<br>IHC 1:50-1:200<br>IF 1:50-1:200        |
| <b>Formulation</b>    | PBS containing 0.02% Sodium Azide, 50% Glycerol, pH7.3.   |
| <b>Isotype</b>        | IgG   |
| <b>Storage</b>        | Store in a freezer at -20°C and avoid freeze-thaw cycles. |
| <b>Instruction</b>    |   |

### TARGET INFORMATION

|                           |   |
|---------------------------|---|
| <b>Gene ID</b>            | 5265  |
| <b>Gene Symbol</b>        | SERPINA1  |
| <b>Uniprot ID</b>         | A1AT_HUMAN  |
| <b>Immunogen</b>          | Recombinant fusion protein containing a sequence corresponding to amino acids 25-315 of human Alpha-1 Antitrypsin (Alpha-1 Antitrypsin (SERPINA1)) (NP_000286.3). |
| <b>Immunogen Region</b>   | 25-315  |
| <b>Specificity</b>        |   |
| <b>Immunogen Sequence</b> |   |



Western blot analysis of extracts of various cell lines, using Alpha-1 Antitrypsin (Alpha-1 Antitrypsin (SERPINA1)) antibody (STJ114355) at 1:1000 dilution. Secondary antibody: HRP Goat Anti-rabbit IgG (H+L) at 1:10000 dilution. Lysates/proteins: 25µg per lane. Blocking buffer: 3% nonfat dry milk in TBST.



Immunofluorescence analysis of PC-12 cells using Alpha-1 Antitrypsin (Alpha-1 Antitrypsin (SERPINA1)) antibody (STJ114355) at dilution of 1:100 (40x lens). Blue: DAPI for nuclear staining.

This product is suitable for in-vitro studies under the RESEARCH USE ONLY [RUO] licence. This product must not be used as for diagnostic or other medical purposes.  
St John's Laboratory Ltd, Knowledge Dock Business Centre, University Way, London, E16 2RD | Tel: 0208 223 3081