

Anti-OGDH antibody (148-427) (STJ114351)

STJ114351

GENERAL INFORMATION

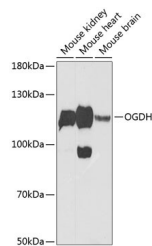
Product Type	Primary antibodies
Short Description	Rabbit polyclonal antibody anti-OGDH (148-427) is suitable for use in Western Blot, Immunohistochemistry and Immunofluorescence.
Applications	WB, IHC, IF
Host/Source	Rabbit
Reactivity	Human, Mouse, Rat

PRODUCT PROPERTIES

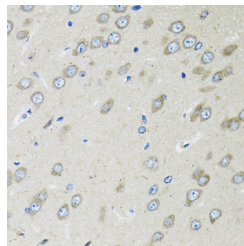
Clonality	Polyclonal
Clone ID	
Concentration	
Conjugation	Unconjugated
Purification	Affinity purification
Dilution Range	WB 1:500-1:2000 IHC 1:50-1:200 IF 1:50-1:200
Formulation	PBS containing 0.02% Sodium Azide, 50% Glycerol, pH7.3.
Isotype	IgG
Storage Instruction	Store in a freezer at -20°C and avoid freeze-thaw cycles.

TARGET INFORMATION

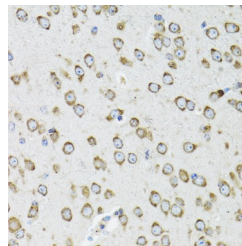
Gene ID	4967
Gene Symbol	OGDH
Uniprot ID	ODO1_HUMAN
Immunogen	Recombinant fusion protein containing a sequence corresponding to amino acids 148-427 of human OGDH (NP_001003941.1).
Immunogen Region	148-427
Specificity	
Immunogen Sequence	



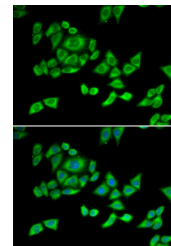
Western blot analysis of extracts of various cell lines, using OGDH Antibody (STJ114351) at 1:1000 dilution. Secondary antibody: HRP Goat Anti-rabbit IgG (H+L) at 1:10000 dilution. Lysates/proteins: 25µg per lane. Blocking buffer: 3% nonfat dry milk in TBST. Detection: ECL Enhanced Kit. Exposure time: 90s.



Immunohistochemistry of paraffin-embedded rat brain using OGDH antibody (STJ114351) at dilution of 1:100 (40x lens).



Immunohistochemistry of paraffin-embedded mouse brain using OGDH antibody (STJ114351) at dilution of 1:100 (40x lens).



Immunofluorescence analysis of U2OS cells using OGDH antibody (STJ114351). Blue: DAPI for nuclear staining.