

Anti-GTF2I antibody (600-810) (STJ114315)

STJ114315

GENERAL INFORMATION

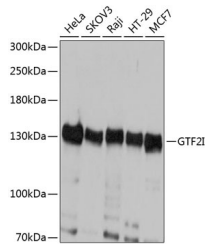
Product Type	Primary antibodies
Short Description	Rabbit polyclonal antibody anti-GTF2I (600-810) is suitable for use in Western Blot, Immunohistochemistry and Immunofluorescence.
Applications	WB, IHC, IF
Host/Source	Rabbit
Reactivity	Human, Mouse, Rat

PRODUCT PROPERTIES

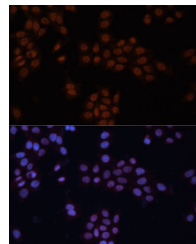
Clonality	Polyclonal
Clone ID	
Concentration	
Conjugation	Unconjugated
Purification	Affinity purification
Dilution Range	WB 1:500-1:2000 IHC 1:50-1:100 IF 1:50-1:100
Formulation	PBS containing 0.02% Sodium Azide, 50% Glycerol, pH7.3.
Isotype	IgG
Storage Instruction	Store in a freezer at -20°C and avoid freeze-thaw cycles.

TARGET INFORMATION

Gene ID	2969
Gene Symbol	GTF2I
Uniprot ID	GTF2I_HUMAN
Immunogen	Recombinant fusion protein containing a sequence corresponding to amino acids 600-810 of human GTF2I (NP_001157108.1).
Immunogen Region	600-810
Specificity	
Immunogen Sequence	



Western blot analysis of extracts of various cell lines, using GTF2I antibody (STJ114315) at 1:1000 dilution. Secondary antibody: HRP Goat Anti-rabbit IgG (H+L) at 1:10000 dilution. Lysates/proteins: 25µg per lane. Blocking buffer: 3% nonfat dry milk in TBST. Detection: ECL Basic Kit. Exposure time: 1s.



Immunofluorescence analysis of HeLa cells using GTF2I antibody (STJ114315) at dilution of 1:100. Blue: DAPI for nuclear staining.