

Anti-GPC3 antibody (290-550) (STJ114261)

STJ114261

GENERAL INFORMATION

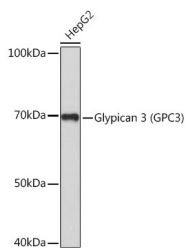
Product Type	Primary antibodies
Short Description	Rabbit polyclonal antibody anti-GPC3 (290-550) is suitable for use in Western Blot and Immunofluorescence.
Applications	WB, IF
Host/Source	Rabbit
Reactivity	Human, Mouse, Rat

PRODUCT PROPERTIES

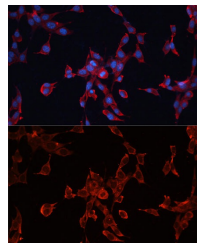
Clonality	Polyclonal
Clone ID	
Concentration	
Conjugation	Unconjugated
Purification	Affinity purification
Dilution Range	WB 1:500-1:2000 IF 1:50-1:200
Formulation	PBS containing 0.02% Sodium Azide, 50% Glycerol, pH7.3.
Isotype	IgG
Storage	Store in a freezer at -20°C and avoid freeze-thaw cycles.
Instruction	

TARGET INFORMATION

Gene ID	2719
Gene Symbol	GPC3
Uniprot ID	GPC3_HUMAN
Immunogen	Recombinant fusion protein containing a sequence corresponding to amino acids 290-550 of human Glypican 3 (Glypican 3 (GPC3)) (NP_004475.1).
Immunogen Region	290-550
Specificity	
Immunogen Sequence	



Western blot analysis of extracts of HepG2 cells, using Glypican 3 (Glypican 3 (GPC3)) rabbit polyclonal antibody (STJ114261) at 1:1000 dilution. Secondary antibody: HRP Goat Anti-rabbit IgG (H+L) at 1:10000 dilution. Lysates/proteins: 25ug per lane. Blocking buffer: 3% nonfat dry milk in TBST. Detection: ECL Basic Kit. Exposure time: 3min.



Immunofluorescence analysis of NIH-3T3 cells using Glypican 3 (Glypican 3 (GPC3)) Polyclonal Antibody (STJ114261) at dilution of 1:100 (40x lens). Blue: DAPI for nuclear staining.

This product is suitable for in-vitro studies under the RESEARCH USE ONLY [RUO] licence. This product must not be used as for diagnostic or other medical purposes.
St John's Laboratory Ltd, Knowledge Dock Business Centre, University Way, London, E16 2RD | Tel: 0208 223 3081