

Anti-PTGER1 antibody (300-400) (STJ114196)

STJ114196

GENERAL INFORMATION

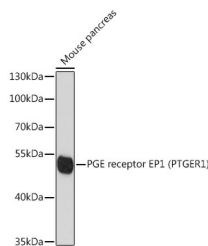
Product Type	Primary antibodies
Short Description	Rabbit polyclonal antibody anti-PTGER1 (300-400) is suitable for use in Western Blot.
Applications	WB
Host/Source	Rabbit
Reactivity	Mouse

PRODUCT PROPERTIES

Clonality	Polyclonal
Clone ID	
Concentration	
Conjugation	Unconjugated
Purification	Affinity purification
Dilution Range	WB 1:500-1:2000
Formulation	PBS containing 0.02% Sodium Azide, 50% Glycerol, pH7.3.
Isotype	IgG
Storage	Store in a freezer at -20°C and avoid freeze-thaw cycles.
Instruction	

TARGET INFORMATION

Gene ID	5731
Gene Symbol	PTGER1
Uniprot ID	PE2R1_HUMAN
Immunogen	A synthetic peptide corresponding to a sequence within amino acids 300-400 of human PGE receptor EP1 (PGE receptor EP1 (PTGER1)) (NP_000946.2).
Immunogen Region	300-400
Specificity	
Immunogen Sequence	



Western blot analysis of extracts of mouse pancreas, using PGE receptor EP1 (PGE receptor EP1 (PTGER1)) antibody (STJ114196) at 1:1000 dilution. Secondary antibody: HRP Goat Anti-rabbit IgG (H+L) at 1:10000 dilution. Lysates/proteins: 25µg per lane. Blocking buffer: 3% nonfat dry milk in TBST. Detection: ECL Enhanced Kit. Exposure time: 90s.

This product is suitable for in-vitro studies under the RESEARCH USE ONLY [RUO] licence. This product must not be used as for diagnostic or other medical purposes.
 St John's Laboratory Ltd, Knowledge Dock Business Centre, University Way, London, E16 2RD | Tel: 0208 223 3081