

Anti-VEGFA antibody (27-126) (STJ114190)

STJ114190

GENERAL INFORMATION

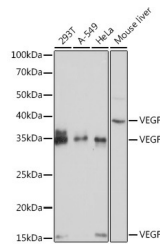
Product Type	Primary antibodies
Short Description	Rabbit polyclonal antibody anti-VEGF (27-126) is suitable for use in Western Blot, Immunohistochemistry and Immunofluorescence.
Applications	WB, IHC, IF
Host/Source	Rabbit
Reactivity	Human, Mouse, Rat

PRODUCT PROPERTIES

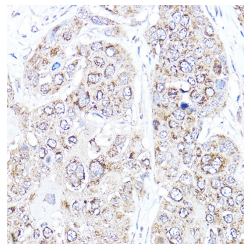
Clonality	Polyclonal
Clone ID	
Concentration	
Conjugation	Unconjugated
Purification	Affinity purification
Dilution Range	WB 1:500-1:2000 IHC 1:50-1:200 IF 1:50-1:200
Formulation	PBS containing 0.02% Sodium Azide, 50% Glycerol, pH7.3.
Isotype	IgG
Storage Instruction	Store in a freezer at -20°C and avoid freeze-thaw cycles.

TARGET INFORMATION

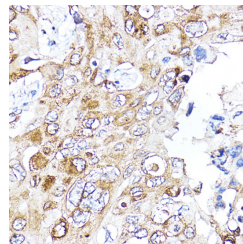
Gene ID	7422
Gene Symbol	VEGFA
Uniprot ID	VEGFA_HUMAN
Immunogen	Recombinant fusion protein containing a sequence corresponding to amino acids 27-126AA of human VEGF (NP_001165099.1).
Immunogen Region	27-126
Specificity	
Immunogen Sequence	



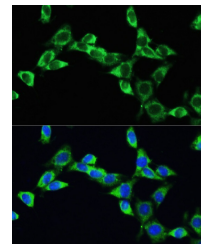
Western blot analysis of extracts of various cell lines, using VEGF antibody (STJ114190) at 1:1000 dilution. Secondary antibody: HRP Goat Anti-rabbit IgG (H+L) at 1:10000 dilution. Lysates/proteins: 25µg per lane. Blocking buffer: 3% nonfat dry milk in TBST. Detection: ECL Basic Kit. Exposure time: 5s.



Immunohistochemistry of paraffin-embedded Human esophagus cancer using VEGF antibody (STJ114190) at dilution of 1:100 (40x lens). Perform high pressure antigen retrieval with 10 mM citrate buffer pH 6. 0 before commencing with immunohistochemistry staining protocol.



Immunohistochemistry of paraffin-embedded Human lung cancer using VEGF antibody (STJ114190) at dilution of 1:100 (40x lens). Perform high pressure antigen retrieval with 10 mM citrate buffer pH 6. 0 before commencing with immunohistochemistry staining protocol.



Immunofluorescence analysis of NIH/3T3 cells using VEGF rabbit polyclonal antibody (STJ114190) at dilution of 100 (40x lens). Blue: DAPI for nuclear staining.