

## Anti-COPZ1 antibody (1-177) (STJ114041)

STJ114041

### GENERAL INFORMATION

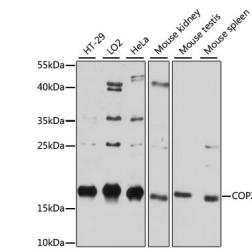
|                          |                                                                                                           |
|--------------------------|-----------------------------------------------------------------------------------------------------------|
| <b>Product Type</b>      | Primary antibodies                                                                                        |
| <b>Short Description</b> | Rabbit polyclonal antibody anti-COPZ1 (1-177) is suitable for use in Western Blot and Immunofluorescence. |
| <b>Applications</b>      | WB, IF                                                                                                    |
| <b>Host/Source</b>       | Rabbit                                                                                                    |
| <b>Reactivity</b>        | Human, Mouse                                                                                              |

### PRODUCT PROPERTIES

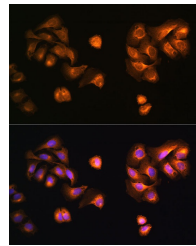
|                            |                                                           |
|----------------------------|-----------------------------------------------------------|
| <b>Clonality</b>           | Polyclonal                                                |
| <b>Clone ID</b>            |                                                           |
| <b>Concentration</b>       |                                                           |
| <b>Conjugation</b>         | Unconjugated                                              |
| <b>Purification</b>        | Affinity purification                                     |
| <b>Dilution Range</b>      | WB 1:500-1:2000<br>IF 1:50-1:200                          |
| <b>Formulation</b>         | PBS containing 0.02% Sodium Azide, 50% Glycerol, pH7.3.   |
| <b>Isotype</b>             | IgG                                                       |
| <b>Storage Instruction</b> | Store in a freezer at -20°C and avoid freeze-thaw cycles. |

### TARGET INFORMATION

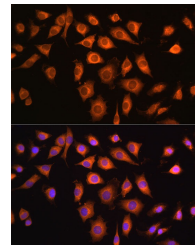
|                           |                                                                                                                   |
|---------------------------|-------------------------------------------------------------------------------------------------------------------|
| <b>Gene ID</b>            | 22818                                                                                                             |
| <b>Gene Symbol</b>        | COPZ1                                                                                                             |
| <b>Uniprot ID</b>         | COPZ1_HUMAN                                                                                                       |
| <b>Immunogen</b>          | Recombinant fusion protein containing a sequence corresponding to amino acids 1-177 of human COPZ1 (NP_057141.1). |
| <b>Immunogen Region</b>   | 1-177                                                                                                             |
| <b>Specificity</b>        |                                                                                                                   |
| <b>Immunogen Sequence</b> |                                                                                                                   |



Western blot analysis of extracts of various cell lines, using COPZ1 antibody (STJ114041) at 1:3000 dilution. Secondary antibody: HRP-Coat Anti-rabbit IgG (H+L) at 1:10000 dilution. Lysates/proteins: 25µg per lane. Blocking buffer: 3% nonfat dry milk in TBST. Detection: ECL Basic Kit. Exposure time: 10s.



Immunofluorescence analysis of U2OS cells using COPZ1 antibody (STJ114041) at dilution of 1:100. Blue: DAPI for nuclear staining.



Immunofluorescence analysis of L929 cells using COPZ1 antibody (STJ114041) at dilution of 1:100. Blue: DAPI for nuclear staining.

This product is suitable for in-vitro studies under the RESEARCH USE ONLY [RUO] licence. This product must not be used as for diagnostic or other medical purposes.  
 St John's Laboratory Ltd, Knowledge Dock Business Centre, University Way, London, E16 2RD | Tel: 0208 223 3081