

## Anti-STAT1 antibody (650-750) (STJ113973)

STJ113973

### GENERAL INFORMATION

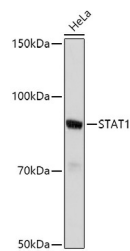
|                          |  |
|--------------------------|--|
| <b>Product Type</b>      | Primary antibodies   |
| <b>Short Description</b> | Rabbit polyclonal antibody anti-STAT1 (650-750) is suitable for use in Western Blot, Immunohistochemistry, Immunofluorescence and Immunoprecipitation. |
| <b>Applications</b>      | WB, IHC, IF, IP  |
| <b>Host/Source</b>       | Rabbit   |
| <b>Reactivity</b>        | Human, Mouse, Rat  |

### PRODUCT PROPERTIES

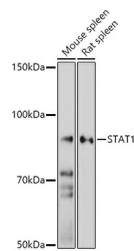
|                       |  |
|-----------------------|--|
| <b>Clonality</b>      | Polyclonal   |
| <b>Clone ID</b>       |  |
| <b>Concentration</b>  |  |
| <b>Conjugation</b>    | Unconjugated   |
| <b>Purification</b>   | Affinity purification  |
| <b>Dilution Range</b> | WB 1:500-1:2000<br>IHC 1:50-1:200<br>IF 1:50-1:200<br>IP 1:20-1:50 |
| <b>Formulation</b>    | PBS containing 0.02% Sodium Azide, 50% Glycerol, pH7.3.            |
| <b>Isotype</b>        | IgG  |
| <b>Storage</b>        | Store in a freezer at -20°C and avoid freeze-thaw cycles.          |
| <b>Instruction</b>    |  |

### TARGET INFORMATION

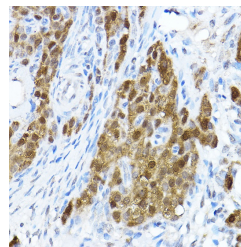
|                           |  |
|---------------------------|--|
| <b>Gene ID</b>            | 6772   |
| <b>Gene Symbol</b>        | STAT1  |
| <b>Uniprot ID</b>         | STAT1_HUMAN  |
| <b>Immunogen</b>          | A synthetic peptide corresponding to a sequence within amino acids 650-750 of human STAT1 (NP_009330.1). |
| <b>Immunogen Region</b>   | 650-750  |
| <b>Specificity</b>        |  |
| <b>Immunogen Sequence</b> |  |



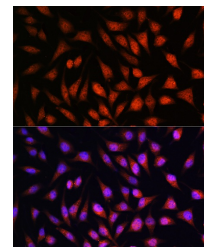
Western blot analysis of extracts of HeLa cells, using STAT1 antibody (STJ113973) at 1:500 dilution. Secondary antibody: HRP Goat Anti-rabbit IgG (H+L) at 1:10000 dilution. Lysates/proteins: 25ug per lane. Blocking buffer: 3% nonfat dry milk in TBST. Detection: ECL Basic Kit. Exposure time: 30s.



Western blot analysis of extracts of various cell lines, using STAT1 antibody (STJ113973) at 1:500 dilution. Secondary antibody: HRP Goat Anti-rabbit IgG (H+L) at 1:10000 dilution. Lysates/proteins: 25ug per lane. Blocking buffer: 3% nonfat dry milk in TBST. Detection: ECL Enhanced Kit. Exposure time: 180.



Immunohistochemistry of paraffin-embedded rat ovary using STAT1 rabbit polyclonal antibody (STJ113973) at dilution of 1:100 (40x lens). Perform high pressure antigen retrieval with 10 mM citrate buffer pH 6.0 before commencing with immunohistochemistry staining protocol.



Immunofluorescence analysis of L929 cells using STAT1 rabbit polyclonal antibody (STJ113973) at dilution of 1:100. Blue: DAPI for nuclear staining.

This product is suitable for in-vitro studies under the RESEARCH USE ONLY [RUO] licence. This product must not be used as for diagnostic or other medical purposes.  
St John's Laboratory Ltd, Knowledge Dock Business Centre, University Way, London, E16 2RD | Tel: 0208 223 3081