

Anti-XPOT antibody (1-200) (STJ113944)

STJ113944

GENERAL INFORMATION

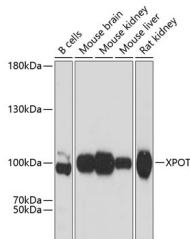
Product Type	Primary antibodies
Short Description	Rabbit polyclonal antibody anti-XPOT (1-200) is suitable for use in Western Blot.
Applications	WB
Host/Source	Rabbit
Reactivity	Human, Mouse, Rat

PRODUCT PROPERTIES

Clonality	Polyclonal
Clone ID	
Concentration	
Conjugation	Unconjugated
Purification	Affinity purification
Dilution Range	WB 1:500-1:2000
Formulation	PBS containing 0.02% Sodium Azide, 50% Glycerol, pH7.3.
Isotype	IgG
Storage Instruction	Store in a freezer at -20°C and avoid freeze-thaw cycles.

TARGET INFORMATION

Gene ID	11260
Gene Symbol	XPOT
Uniprot ID	XPOT_HUMAN
Immunogen	Recombinant fusion protein containing a sequence corresponding to amino acids 1-200 of human XPOT (NP_009166.2).
Immunogen Region	1-200
Specificity	
Immunogen Sequence	



Western blot analysis of extracts of various cell lines, using XPOT antibody (STJ113944) at 1:3000 dilution. Secondary antibody: HRP Goat Anti-rabbit IgG (H+L) at 1:10000 dilution. Lysates/proteins: 25µg per lane. Blocking buffer: 3% nonfat dry milk in TBST. Detection: ECL Basic Kit. Exposure time: 10s.