

## Anti-KRT1 antibody (200-450) (STJ113874)

STJ113874

### GENERAL INFORMATION

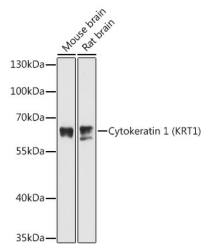
|                          |   |
|--------------------------|---|
| <b>Product Type</b>      | Primary antibodies  |
| <b>Short Description</b> | Rabbit polyclonal antibody anti-KRT1 (200-450) is suitable for use in Western Blot. |
| <b>Applications</b>      | WB  |
| <b>Host/Source</b>       | Rabbit  |
| <b>Reactivity</b>        | Mouse, Rat  |

### PRODUCT PROPERTIES

|                       |   |
|-----------------------|---|
| <b>Clonality</b>      | Polyclonal  |
| <b>Clone ID</b>       |   |
| <b>Concentration</b>  |   |
| <b>Conjugation</b>    | Unconjugated  |
| <b>Purification</b>   | Affinity purification                                     |
| <b>Dilution Range</b> | WB 1:500-1:1000   |
| <b>Formulation</b>    | PBS containing 0.02% Sodium Azide, 50% Glycerol, pH7.3.   |
| <b>Isotype</b>        | IgG   |
| <b>Storage</b>        | Store in a freezer at -20°C and avoid freeze-thaw cycles. |
| <b>Instruction</b>    |   |

### TARGET INFORMATION

|                           |  |
|---------------------------|--|
| <b>Gene ID</b>            | 3848   |
| <b>Gene Symbol</b>        | KRT1   |
| <b>Uniprot ID</b>         | K2C1_HUMAN   |
| <b>Immunogen</b>          | Recombinant fusion protein containing a sequence corresponding to amino acids 200-450 of human Cytokeratin 1 (Cytokeratin 1 (KRT1)) (NP_006112.3). |
| <b>Immunogen Region</b>   | 200-450  |
| <b>Specificity</b>        |  |
| <b>Immunogen Sequence</b> |  |



Western blot analysis of extracts of various cell lines, using Cytokeratin 1 (Cytokeratin 1 (KRT1)) antibody (STJ113874) at 1:3000 dilution. Secondary antibody: HRP Goat Anti-rabbit IgG (H+L) at 1:10000 dilution. Lysates/proteins: 25µg per lane. Blocking buffer: 3% nonfat dry milk in TBST. Detection: ECL Basic Kit. Exposure time: 90s.

This product is suitable for in-vitro studies under the RESEARCH USE ONLY [RUO] licence. This product must not be used as for diagnostic or other medical purposes.  
 St John's Laboratory Ltd, Knowledge Dock Business Centre, University Way, London, E16 2RD | Tel: 0208 223 3081